

SSL 2+

User Guide



Solid State Logic

O X F O R D • E N G L A N D

Visit SSL at:
www.solidstatelogic.com

© Solid State Logic

All rights reserved under International and Pan-American Copyright Conventions

SSL® and Solid State Logic® are ® registered trademarks of Solid State Logic.

SSL 2+™ is a trademark of Solid State Logic.

All other product names and trademarks are the property of their respective owners and are hereby acknowledged.

Pro Tools® is a registered trademark of Avid®.

Live Live™ is a trademark of Ableton AG.

Guitar Rig™ is a trademark of Native Instruments GmbH.

Loopcloud™ is a trademark of Loopmasters®.

No part of this publication may be reproduced in any form or by any means, whether mechanical or electronic, without the written permission of Solid State Logic, Oxford, OX5 1RU, England.

As research and development is a continual process, Solid State Logic reserves the right to change the features and specifications described herein without notice or obligation.

Solid State Logic cannot be held responsible for any loss or damage arising directly or indirectly from any error or omission in this manual.

PLEASE READ ALL INSTRUCTIONS, PAY SPECIAL HEED TO SAFETY WARNINGS.

E&OE

January 2020

Introduction to SSL 2+

Congratulations on purchasing your SSL 2+ USB audio interface. A whole world of recording, writing and production awaits you! We know you're probably keen to get up-and-running, so this User Guide is set out to be as informative and useful as possible. It should provide you with a solid reference for how to get the best out of your SSL 2+. If you get stuck, don't worry, the support section of our website is full of useful resources to get you going again.

From Abbey Road To Your Desktop

SSL equipment has been at the heart of record production for the best part of four decades. If you have ever stepped foot inside of a professional recording studio or perhaps watched a documentary following the making of any kind of classic album, then the chances are that you have already seen an SSL console before. We are talking about studios like Abbey Road; musical home to The Beatles, Larrabee; birthplace of Michael Jackson's legendary 'Dangerous' album or Conway Recording Studios, which regularly hosts the world's biggest artists such as Taylor Swift, Pharrell Williams and Daft Punk. This list goes on and covers thousands of SSL-equipped studios worldwide.

Of course, today, you no longer need to head into a big commercial studio to get started recording music - all you need is a laptop, a microphone and an audio interface... and that's where SSL 2+ comes in. Over forty years' experience in manufacturing the finest audio consoles the world has ever seen (and heard!) brings us to this new and exciting point. With SSL 2+, you can now begin your musical journey recording on an SSL, from the comfort of your own desktop...wherever that may be!

Technical Excellence Breeds Creative Freedom

No one understands the recording process better than us. The widespread success of SSL consoles such as the SL4000E/G, SL9000J, XL9000K and more recently AWS and Duality, is built upon a thorough and detailed understanding of what musicians all over the world need to be creative. It's really simple, the recording equipment should be as invisible as possible in the session. Creative ideas need to flow and technology has to allow those ideas to be captured effortlessly into the computer. Workflow is paramount and a great sound is essential. SSL consoles are designed with workflow at their heart, to ensure that the artist's vision is ready to be captured whenever inspiration strikes. SSL audio circuitry is engineered to the highest standards to provide impeccable sound quality; capturing every last note, every change in dynamics and every musical nuance.

Standing On The Shoulders Of Giants

SSL equipment has always evolved to meet the exacting needs and demands of the best producers all over the world. As a company, we are constantly innovating and developing our products to make sure that they continue to meet and exceed new benchmarks. We have always listened carefully to user feedback to ensure that we are creating audio products that are referred to by professionals as 'instruments in their own right'. The technology should provide a platform for the creator and that platform needs to aid, not hinder the musical performance because at the end of the day, a great song is nothing without a great performance.

The Start Of Your SSL Journey...

So here we are at the start of a new chapter with SSL 2 and SSL 2+, putting our many years of experience into some fresh audio creation tools designed to allow you to focus on being creative whilst we take care of the sound. You will be following in the footsteps of artists with many thousands of hit records between them. Records that were and continue to be engineered, mixed and produced on SSL consoles; from Dr. Dre to Madonna, Timbaland to Green Day, from Ed Sheeran to The Killers, whatever your musical influences... you are in safe hands.

Table of Contents

Introduction to SSL 2+	1
Overview	4
What is SSL 2+?	4
Features	4
Get-Started	5
Unpacking	5
USB Cables & Power	5
USB Hubs	5
System Requirements	5
Registering Your SSL 2+	6
What is the SSL Production Pack?	6
Quick-Start / Installation	7
Can't Hear Anything?	8
Selecting SSL 2+ As Your DAW's Audio Device	9
Pro Tools First Setup	9
Ableton Live Lite Setup	9
Front Panel Controls	10
Input Channels	10
Monitoring Section	11
Rear Panel Connections	12
How-To / Application Examples	13
Connections Overview	13
Connecting Your Monitors and Headphones	14
Connecting SSL 2+ To A DJ Mixer	15
Selecting Your Input and Setting Levels	16
Dynamic Microphones	16
Condenser Microphones	16
Keyboards and Other Line-Level Sources	17
Electric Guitars and Basses (Hi-Impedance Sources)	17
Monitoring Your Inputs	18
When To Use The STEREO Switch	18
Setting Up Your DAW To Record	19
Low Latency - Using The Monitor Mix Control	19
What is Latency in relation to recording sound?	19
How To Use The Monitor Mix Control When Recording & Playing Back	19
Hearing Double?	20
DAW Buffer Size	20
Sample Rate	21
SSL USB Control Panel (Windows Only)	21
Safe Mode	21
Using PHONES B	22
Creating A Separate Mix in Pro Tools First	22
Using Phones B 3&4 Switch To Cue Up Tracks In Ableton Live	23
Specifications	24

Audio Performance Specifications	24
Digital Audio	25
Physical	25
Troubleshooting & FAQs	26
Important Safety Notices	27

Overview

What is SSL 2+?

SSL 2+ is a USB-powered audio interface that enables you to get studio-quality audio into and out of your computer with minimal fuss and maximum creativity. On Mac, it's class-compliant - this means that you don't need to install any software audio drivers. On PC, you'll need to install our SSL USB Audio ASIO/WDM driver, which you'll find on our website - see the [Quick-Start](#) section of this guide for more information on getting up-and-running.

Once you've done this, you'll be ready to start connecting your microphones and musical instruments to the Combo XLR-Jack inputs on the rear panel. The signals from these inputs will be sent into your favourite music creation software / DAW (Digital Audio Workstation). The outputs from the tracks in your DAW session (or indeed your favourite media player) can be sent out of the monitor and headphone outputs on the rear panel, so you can hear your creations in all their glory, with stunning clarity.

Features

- 2 x SSL-designed microphone preamps with unrivalled EIN performance and huge gain range for a USB-powered device
- Per channel Legacy 4K switches - analogue colour enhancement for any input source, inspired by the 4000-series console
- 2 x professional-grade headphone outputs, with plenty of power
- 24-bit / 192 kHz AD/DA Converters - capture and hear all the detail of your creations
- Easy-to-use Monitor Mix Control for critical low-latency monitoring tasks
- 2 x balanced monitor outputs, with stunning dynamic range
- 4 x unbalanced outputs - for easy connection of SSL 2+ to DJ mixers
- MIDI Input and MIDI Output 5-Pin DIN Ports
- SSL Production Pack Software Bundle: including SSL Native Vocalstrip 2 and Drumstrip DAW plug-ins, plus much more!
- USB 2.0, bus-powered audio interface for Mac/PC - no power supply required
- K-Lock Slot for securing your SSL 2+

SSL 2 vs SSL 2+

Which one is right for you, the SSL 2 or the SSL 2+? The table below will help you to compare and contrast the differences between SSL 2 and SSL 2+. Both have 2 input channels for recording and balanced monitor outputs for connecting to your speakers. The SSL 2+ gives you 'that little bit more', with an additional professional high-powered headphone output, complete with independent level control, making it perfect for when you are recording with another person. Furthermore, this additional headphone output can be configured to provide a different headphone mix. SSL 2+ also features additional outputs for easy connection to DJ mixers and finally, traditional MIDI input and MIDI outputs, for connecting to drum modules or keyboards.

Feature	SSL 2	SSL 2+
Best Suited For	Individuals	Collaborators
Mic/Line/Instrument Inputs	2	2
Legacy 4K Switches	Yes	Yes
Balanced Stereo Monitor Outputs	Yes	Yes
Unbalanced Outputs	-	Yes
Headphone Outputs	1	2
Low- Latency Monitor Mix Control	Yes	Yes
MIDI I/O	-	Yes
USB Bus-Powered	Yes	Yes

SSL 2 vs SSL 2+ comparison at a glance

Get-Started

Unpacking

The unit has been carefully packed and inside the box you will find the following items:

- SSL 2+
- Quickstart/Safety Guide
- 1m 'C' to 'C' USB Cable
- 1m 'A' to 'C' USB Cable

USB Cables & Power

Please use one of the provided USB cables ('C' to 'C' or 'C' to 'A') to connect the SSL 2+ to your computer. The connector on the rear of SSL 2+ is a 'C' type. The type of USB port you have available on your computer will determine which of the two included cables you should use. Newer computers may have 'C' ports, whereas older computers may have 'A'. As this is a USB 2.0 compliant device, it will make no difference to the performance as to which cable you use.

SSL 2+ is powered entirely from the computer's USB-bus power and therefore requires no external power supply. When the unit is receiving power correctly, the green USB LED will light a steady green colour. For best stability and performance, we recommend using one of the included USB cables. Long USB cables (especially 3m and above) should be avoided as they tend to suffer from inconsistent performance and are unable to provide steady and reliable power to the unit.

USB Hubs

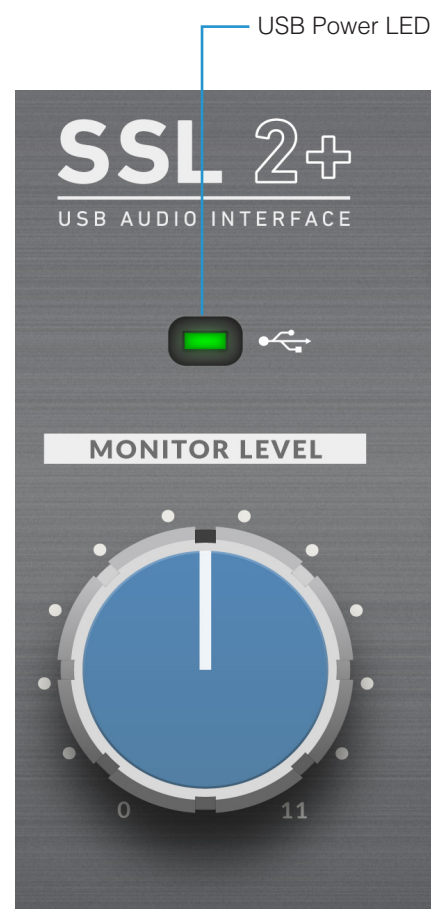
Wherever possible, it is best to connect SSL 2+ directly to a spare USB port on your computer. This will give you the stability of an uninterrupted supply of USB power. However, if you do need to connect via a USB 2.0 compliant hub, then it is recommended that you choose one of high enough quality to provide reliable performance - not all USB hubs were created equally. With SSL 2+, we've really pushed the limits of audio performance on a USB bus-powered interface and as such, some low-cost self-powered hubs might not always be up to the task. Usefully, you can check out our FAQs at solidstatellogic.com/support to see which hubs we've successfully used and found to be reliable with SSL 2+.

Safety Notices

Please read the [Important Safety Notices](#) at the end of this User Guide before use.

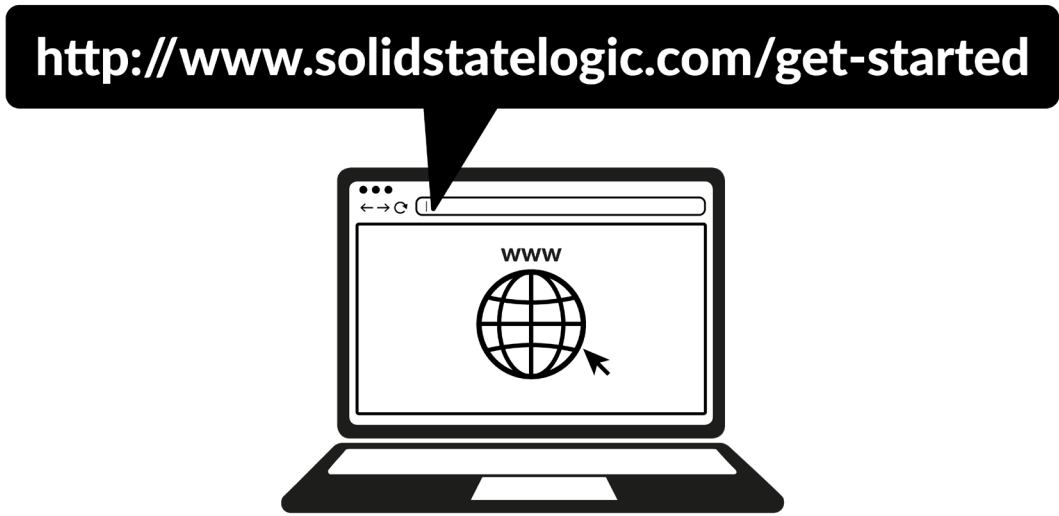
System Requirements

Mac and Windows operating systems and hardware are constantly changing. Please search for 'SSL 2+ Compatibility' in our online FAQs to see if your system is currently supported.



Registering Your SSL 2+

Registering your SSL USB audio interface will grant you access to an array of exclusive software from us and other industry-leading software companies - we call this incredible bundle the '**SSL Production Pack**' .



To register your product, head to www.solidstatellogic.com/get-started and follow the on-screen instructions. During the registration process, you'll need to input the serial number of your unit. **This can be found on the label on the base of your unit.**

**XX-XXXXXX-XXXXXXXXXXXXX
SERIAL NUMBER**

Please note: the actual serial number begins with the letters 'SP'

Once you have completed registration, all of your software content will be available in your logged in user area. You can return to this area at any time by logging back into your SSL account at www.solidstatellogic.com/login should you wish to download the software another time.

What is the SSL Production Pack?

The SSL Production Pack is an exclusive software bundle from SSL and other third-party companies. To find out more please visit the SSL 2+ product pages on the website.

What's Included?

DAWs

- Avid Pro Tools® | First + an exclusive SSL collection of AAX plug-ins
- Ableton® Live Lite™

Virtual Instruments, Samples & Sample Players

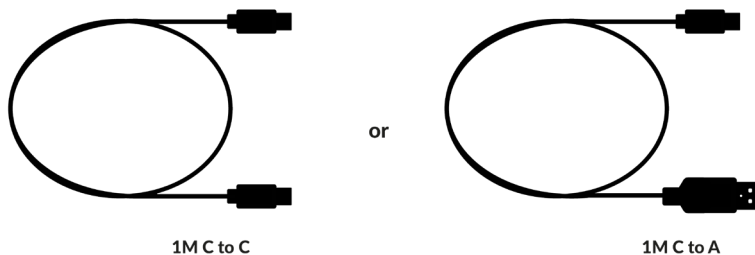
- Native Instruments® Hybrid Keys™ & Komplete Start™
- 1.5GB of complimentary samples from Loopcloud™, curated especially by SSL

SSL Native Plug-ins

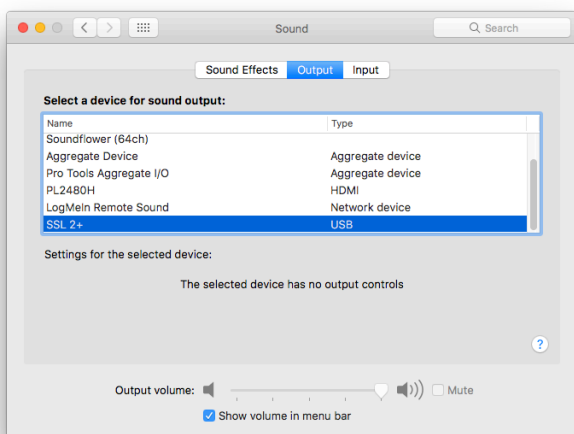
- SSL Native Vocalstrip 2 and Drumstrip DAW Plug-in Full Licenses
- 6-month extended trial of all other SSL Native Plug-ins in the range (including Channel Strip, Bus Compressor, X-Saturator and more)

Quick-Start / Installation

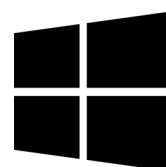
1. Connect your SSL USB audio interface to your computer using one of the included USB cables.



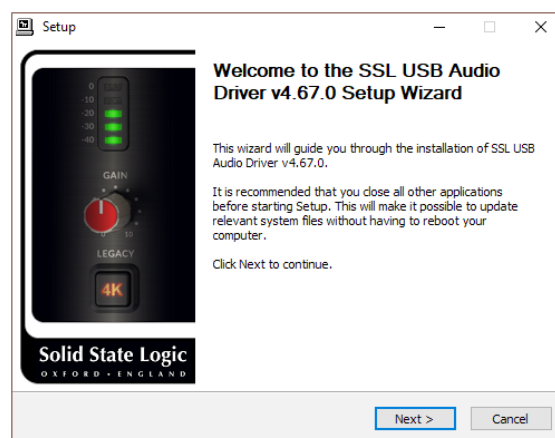
2. Go to 'System Preferences' then 'Sound' and select 'SSL 2+' as the input and output device (drivers are not required for operation on Mac)



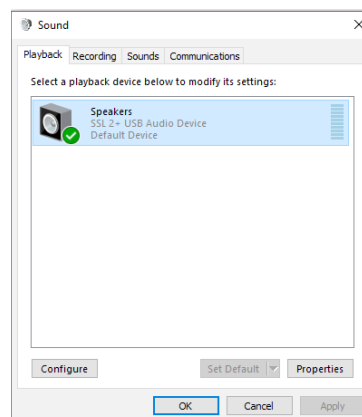
3. Open up your favourite media player to begin listening to music or open up your DAW to begin creating music



2. Download and install the SSL USB ASIO/WDM audio driver for your SSL 2+. Go to the following web address:
www.solidstatellogic.com/support/downloads

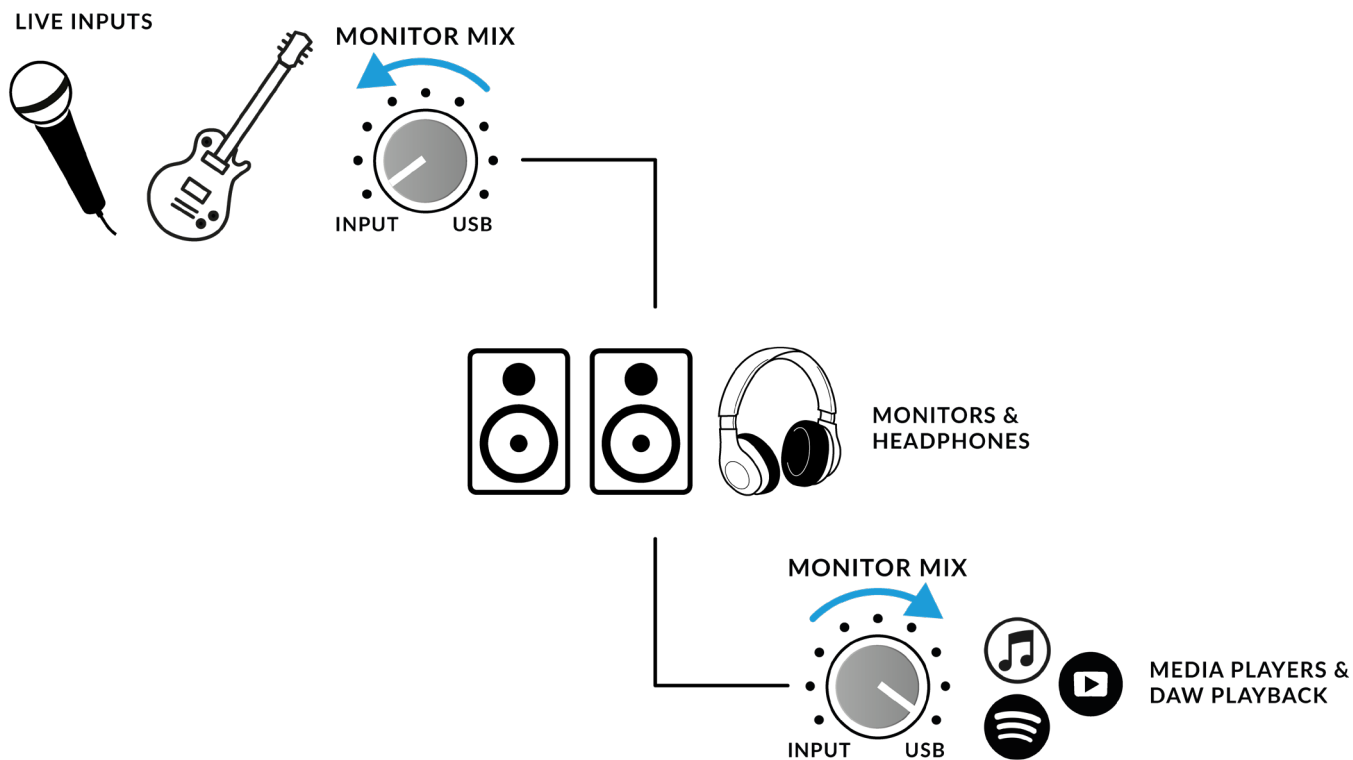


3. Go to 'Control Panel' then 'Sound' and select 'SSL 2+ USB' as the default device on both the 'Playback' and 'Recording' tabs



Can't Hear Anything?

If you have followed the Quick-Start steps but are still not hearing any playback from your media player or DAW, check the position of the **MONITOR MIX** control. In the left-most position, you will hear only the inputs you have connected. In the right-most position you will hear the USB playback from your media player/DAW.



*In your DAW, ensure that 'SSL 2+' is selected as your audio device in the **audio preferences** or playback engine settings. Don't know how? Please see the next page...*

Selecting SSL 2+ As Your DAW's Audio Device

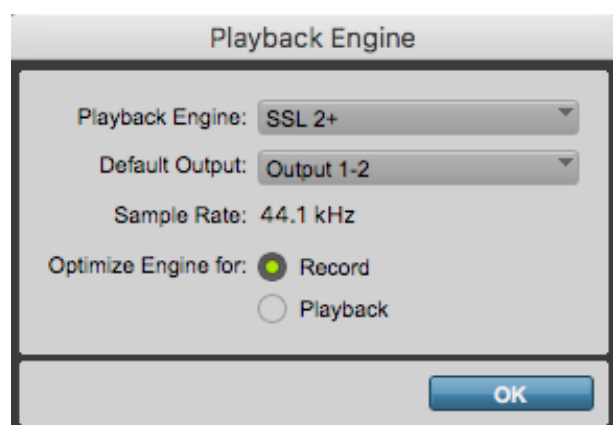
If you have followed the Quick-Start / Installation section then you are ready to open up your favourite DAW and start creating. Included in the SSL Production Pack are copies of Pro Tools | First and Ableton Live Lite DAWs but you can of course use any DAW that supports Core Audio on Mac or ASIO/WDM on Windows.

No matter which DAW you are using, you need to ensure that SSL 2+ is selected as your audio device in the audio preferences/playback settings. Below are examples in Pro Tools | First and Ableton Live Lite. If you are unsure, please refer to your DAW's User Guide to see where these options can be found.

Pro Tools | First Setup

Open up Pro Tools | First and go to the 'Setup' menu and choose 'Playback Engine...'. Make sure that SSL 2+ is selected as the 'Playback Engine' and that 'Default Output' is Output 1-2 because these are the outputs that will be connected to your monitors.

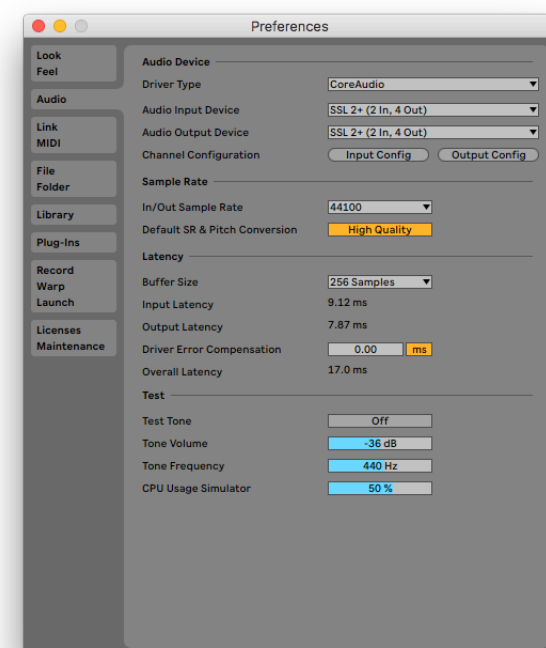
Note: On Windows, ensure that 'Playback Engine' is set to 'SSL 2+ ASIO' for the best possible performance.



Ableton Live Lite Setup

Open up Live Lite and locate the 'Preferences' panel. Make sure that SSL 2+ is selected as the 'Audio Input Device' and 'Audio Output Device' as shown below.

Note: On Windows, ensure that the Driver Type is set to 'ASIO' for the best possible performance.



Front Panel Controls

Input Channels

This section describes the controls for Channel 1. The controls for Channel 2 are exactly the same.

+48V

This switch enables phantom power on the combo XLR connector, which will be sent down the XLR microphone cable to the microphone. Phantom power is required when using condenser microphones. Dynamic microphones do not require phantom power to operate.

LINE

This switch changes the source of the channel input to be from the balanced Line input. Connect line-level sources (such as keyboards, synth modules) using a TRS Jack cable into an input on the rear panel.

HI-Z

This switch changes the impedance of the Line input to be more suitable for guitars or basses. *This feature only works when the LINE switch is also engaged. Pressing HI-Z on its own without LINE engaged will have no effect.*

LED METERING

5 LEDs show the level at which your signal is being recorded into the computer. It is good practice to aim for the '-20' mark (the third green meter point) when recording. Occasionally going into '-10' is fine. If your signal is hitting '0' (top red LED), that means it is clipping, so you need to lower the **GAIN** control or output from your instrument. Scale markings are in dBFS.

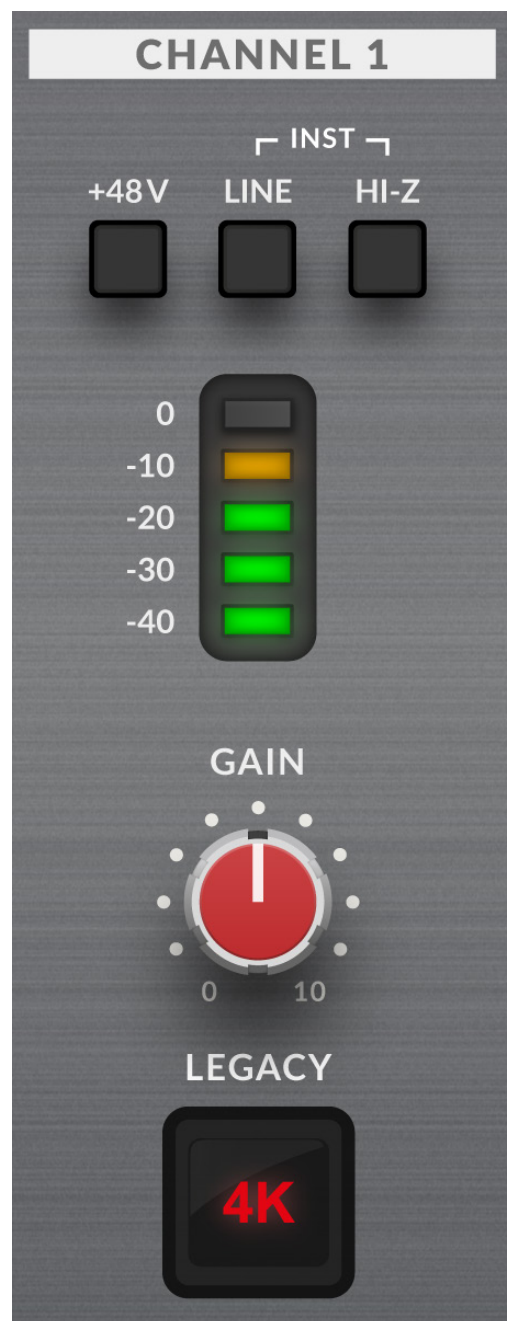
GAIN

This control adjusts the pre-amp gain applied to your microphone or instrument. Adjust this control so that your source is lighting all 3 green LEDs most of the time whilst you are singing/playing your instrument. This will give you a healthy recording level into the computer.

LEGACY 4K - ANALOGUE ENHANCEMENT EFFECT

Engaging this switch allows you to add some extra analogue 'magic' to your input when you need it. It injects a combination of high-frequency EQ-boost, together with some finely tuned harmonic distortion to help enhance sounds. We have found it to be particularly pleasant on sources such as vocals and acoustic guitar. This enhancement effect is created completely in the analogue domain and is inspired by the kind of extra character the legendary SSL 4000-series console (often referred to as '4K') could add to a recording. The 4K was renowned for many things, including a distinctive 'forward', yet musical-sounding EQ, as well as its ability to impart a certain analogue 'mojo'. You will find that most sources become more exciting when the 4K switch is engaged!

'4K' is the abbreviation given to any SSL 4000-series console. 4000-series consoles were manufactured between 1978 and 2003 and are widely regarded as one of the most iconic large-format mixing consoles in history, due to their sound, flexibility and comprehensive automation features. Many 4K consoles are still in use today by the world's leading mix engineers like Chris Lord-Alge (Green Day, Muse, Keith Urban), Andy Wallace (Biffy Clyro, Linkin Park, Coldplay) and Alan Moulder (The Killers, Foo Fighters, Them Crooked Vultures).



Monitoring Section

This section describes the controls found the monitoring section. These controls affect what you hear through your monitor speakers and the headphone outputs.

MONITOR MIX (Top-Right Control)

This control directly affects what you hear coming out of your monitors and headphones. When the control is set to left-most position labelled **INPUT**, you will hear only the sources you have connected to Channel 1 and Channel 2 directly, **without latency**.

If you are recording a stereo input source (e.g. a stereo keyboard or synth) using Channels 1 and 2, press the **STEREO** switch so that you hear it in stereo. If you are only recording using one Channel (e.g. a vocal recording), make sure that **STEREO** is not pressed, otherwise you will hear the vocal in one ear!

When the **MONITOR MIX** control is set to the right-most position labelled **USB**, you will hear only the audio output from your computer's USB stream e.g. music playing from your media player (e.g. iTunes/Spotify/Windows Media Player) or the outputs of your DAW tracks (Pro Tools, Live, etc).

Positioning the control anywhere in-between **INPUT** and **USB** will give you a variable blend of the two options. This can be really useful when you need to record with no audible latency. Please refer to the [How-To / Application Examples](#) section for more information on using this feature.

GREEN USB LED

Illuminates solid green to indicate that the unit is successfully receiving power over USB.

MONITOR LEVEL (Large Blue Control)

This large blue control directly affects the level sent out of **OUTPUTS 1/L** and **2/R** to your monitors. Turn the knob to make the volume louder. Please note the **MONITOR LEVEL** goes to 11 because it's one louder.

PHONES A

This control sets the level for **PHONES A** headphones output.

PHONES B

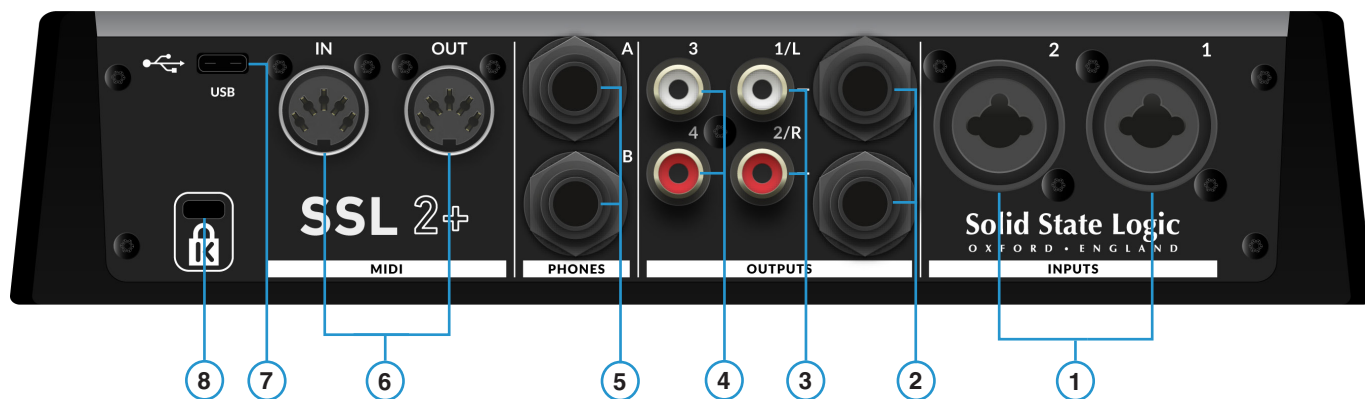
This control sets the level for **PHONES B** headphones output.

3&4 SWITCH (PHONES B)

The switch labelled **3&4** allows you to change what source is feeding the **PHONES B** headphone output. Without **3&4** engaged, **PHONES B** is fed by the same signals feeding **PHONES A**. This is desirable if you are recording with another person and you both want to listen to the same material. However, pressing **3&4** will override this and send USB playback stream 3-4 (instead of 1-2) out of the **PHONES B** headphone output. This can be useful when you are recording another person and they want a *different* headphone mix whilst they record. See the [How-To / Application Examples](#) section for more information on using this feature.



Rear Panel Connections



1 - INPUTS 1 & 2 : Combo XLR / 1/4" Jack Input Sockets

This is where you connect your input sources (microphones, instruments, keyboards) to the unit. Once connected, your inputs are controlled using front panel Channel 1 and Channel 2 controls respectively. The combo XLR / 1/4" Jack socket contains an XLR and a 1/4" Jack in one connector (the Jack socket is the hole in the middle). If you are connecting a microphone, then use an XLR cable. If you want to connect an instrument directly (bass guitar/guitar) or keyboard/synth, then use a Jack cable (TS or TRS Jacks).

Please note that line-level sources (synths, keyboards) can only be connected to the Jack socket. If you have a line-level device that outputs on XLR, then please use a XLR to Jack cable to connect it.

2 - BALANCED LINE OUTPUTS 1 & 2 : 1/4" TRS Jack Output Sockets

These outputs should be connected to your monitors if you are using active monitors or to a power amp if using passive monitors. The level at these outputs is controlled by the large blue control on the front panel labelled **MONITOR LEVEL**. For the best performance, use 1/4" TRS jack cables to connect your monitors.

3 - UNBALANCED LINE OUTPUTS 1 & 2 : RCA Output Sockets

These outputs duplicate the same signals found on the 1/4" TRS Jacks but are unbalanced. The **MONITOR LEVEL** also controls the output level at these connectors. Some monitors or DJ mixers have RCA inputs, so this would be useful for that circumstance.

4 - UNBALANCED LINE OUTPUTS 3 & 4 : RCA Output Sockets

These outputs carry signals from USB streams 3&4. There is no physical level control for these outputs so any level control needs to be done inside the computer. These outputs can be useful when connecting to a DJ mixer. See the **Connecting SSL 2+ Up To A DJ Mixer** section for more information.

5 - PHONES A & PHONES B : 1/4" Output Jacks

Two stereo headphone outputs, with independent level control from the front panel controls labelled **PHONES A** and **PHONES B**.

6 - MIDI IN & MIDI OUT : 5-Pin DIN Sockets

SSL 2+ contains a built-in MIDI interface, allowing you to connect external MIDI equipment like keyboards and drum modules.

7 - USB 2.0 Port : 'C' Type Connector

Connect this to a USB port on your computer, using one of the two cables provided in the box.

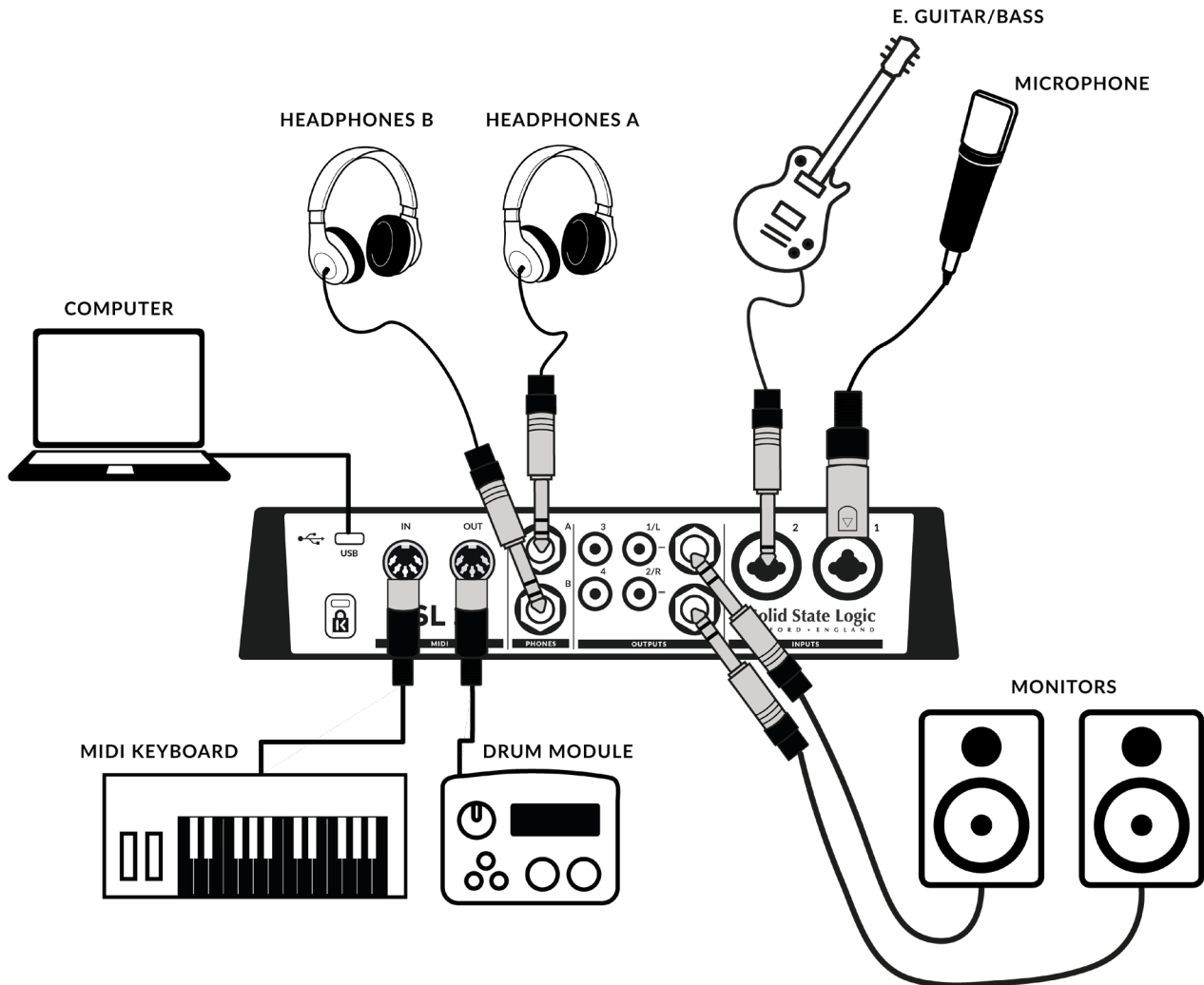
8 - K : Kensington Security Slot

The K slot can be used with a Kensington Lock to secure your SSL 2+.

How-To / Application Examples

Connections Overview

The diagram below illustrates where the various elements of your studio connect to SSL 2+ on the rear panel.



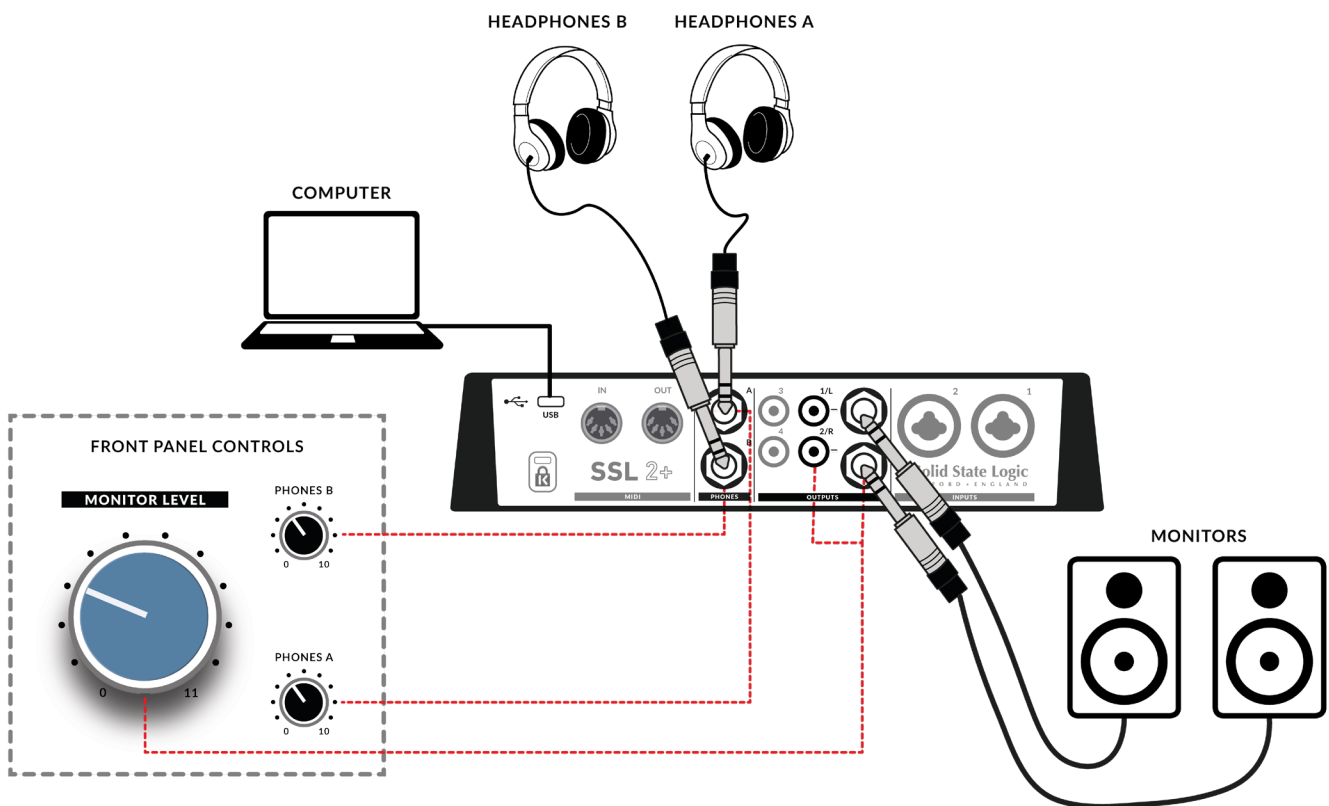
This diagram shows the following:

- A microphone plugged into **INPUT 1**, using an XLR cable
- An electric guitar/bass plugged into **INPUT 2**, using a TS jack cable (standard instrument cable)
- Monitor speakers plugged into **OUTPUT 1/L** and **OUTPUT 2/R**, using TRS jack cables (balanced cables)
- One pair of headphones connected to **PHONES A** and another pair of headphones connected to **PHONES B**
- A computer connected to the USB 2.0, 'C' Type port using one of the provided cables
- A MIDI keyboard connected to the **MIDI IN** connector using a 5-Pin DIN midi cable - as a way of recording MIDI information into the computer
- A Drum Module connected to the **MIDI OUT** connector using a 5-Pin DIN midi cable - as a way of sending MIDI information out of the computer, into the drum module to trigger sounds on the module

The RCA outputs are not shown to be connected to anything in this example, please see [Connecting SSL 2+ to a DJ Mixer](#) for more information on using the RCA outputs.

Connecting Your Monitors and Headphones

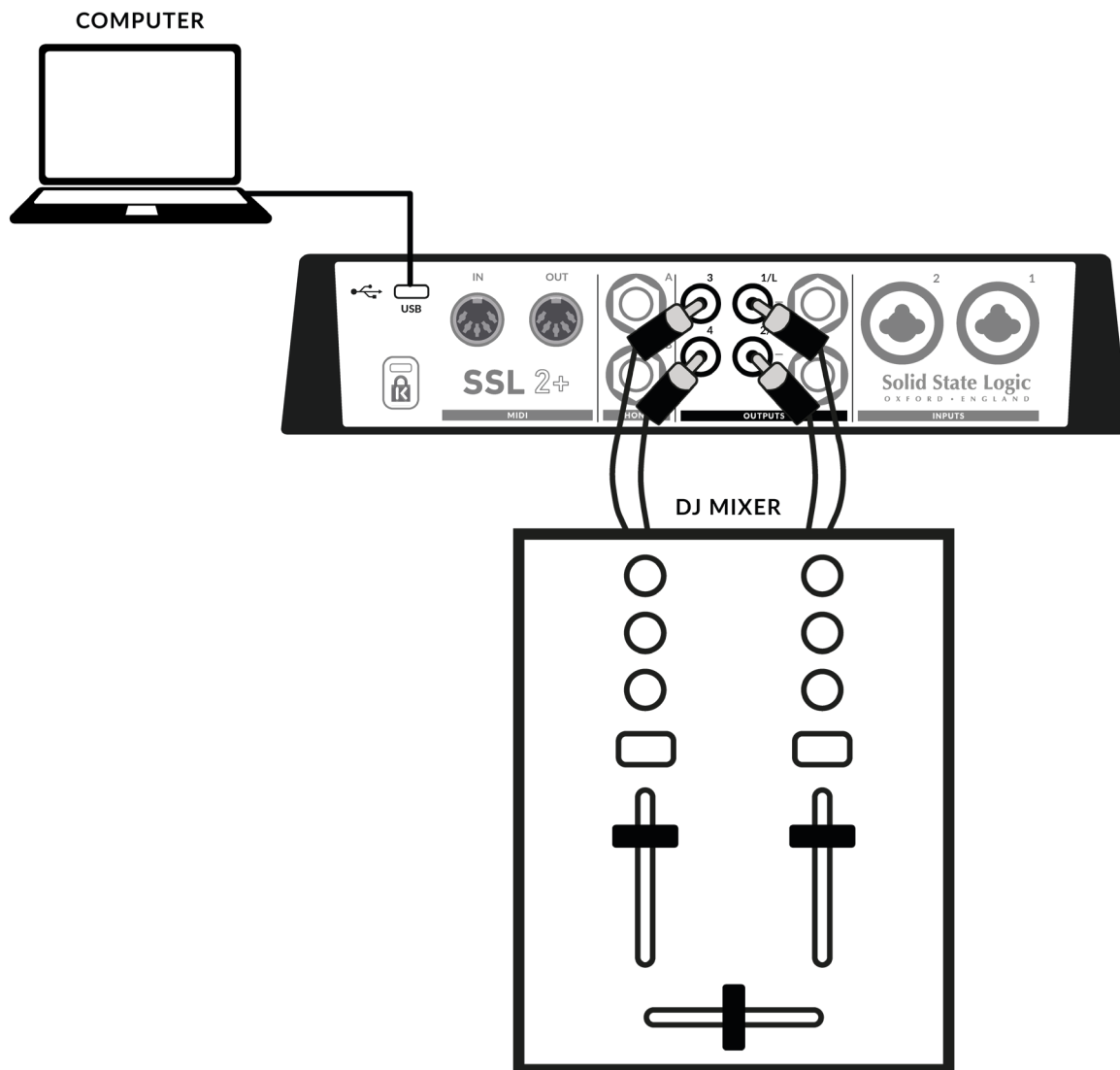
The diagram below shows where to connect your monitors and headphones up to your SSL 2+. It also shows the interaction of the front panel controls with the various output connections on the rear.



- The large front panel **MONITOR LEVEL** control affects the output level of the balanced TRS jack outputs labelled **1/L** and **2/R**. We recommend that you connect your monitors to these outputs. These outputs are duplicated on the RCA connectors **1/L** and **2/R**, which are also affected by the **MONITOR LEVEL** control.
- Please note that RCA Outputs 3-4 are not affected by the **MONITOR LEVEL** and output at full level. These outputs are not intended to be connected to monitors.
- **PHONES A** and **PHONES B** have individual level controls that affect the level output on the rear **PHONES A** and **PHONES B** connectors.

Connecting SSL 2+ To A DJ Mixer

The diagram below shows how to connect your SSL 2+ to a DJ mixer, making use of the 4 RCA outputs on the rear panel. In this case, you would be using DJ software on your computer that would allow separate stereo tracks to be played out of Outputs 1-2 and 3-4, that can be mixed together on the DJ mixer. As the DJ Mixer would be controlling the overall level of each track, you should turn the large front panel **MONITOR LEVEL** to it's maximum position, so that it outputs at the same full level as Outputs 3-4. If you are returning to your studio to using Outputs 1-2 for monitoring, remember to turn the pot back down again!



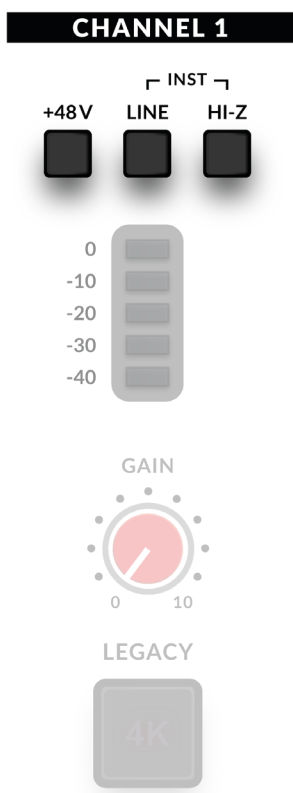
Selecting Your Input and Setting Levels

Dynamic Microphones

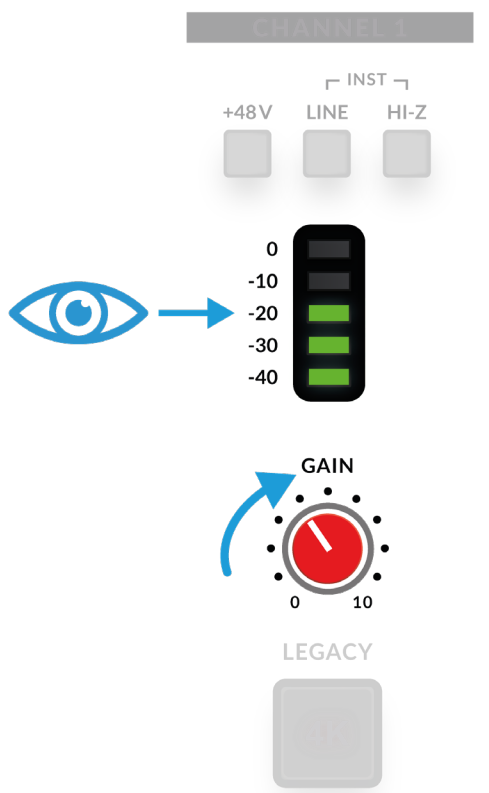
Plug your microphone into **INPUT 1** or **INPUT 2** on the rear panel using an XLR cable.

1. On the front panel, make sure that none of the top 3 switches (+48V, LINE, HI-Z) are pressed down.
2. Whilst singing or playing your instrument that has been mic'd up, turn the **GAIN** control up until you consistently get 3 green lights on the meter. This represents a healthy signal level. It's OK to light up the amber LED (-10) occasionally but make sure you don't hit the top red LED. If you do, you'll need to turn the **GAIN** control down again to stop clipping.
3. Push the **LEGACY 4K** switch to add some extra analogue character to your input, if you need it.

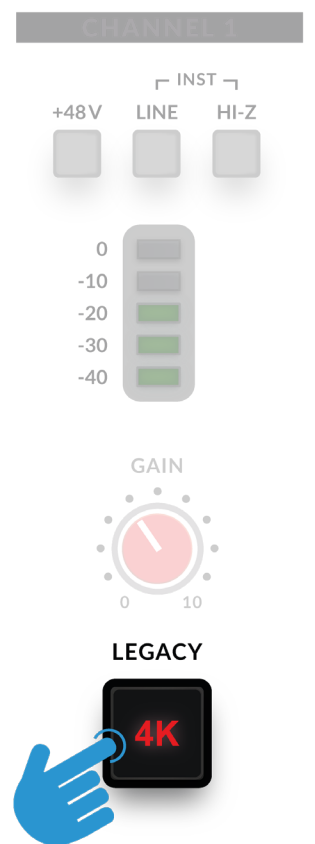
STEP 1



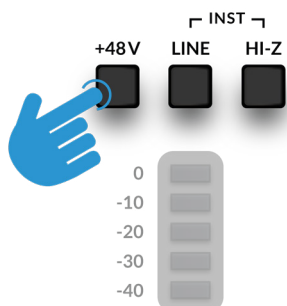
STEP 2



STEP 3

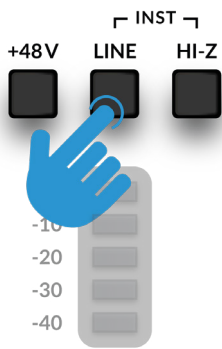


CHANNEL 1

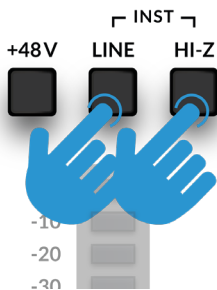


Condenser Microphones

Condenser microphones require phantom power (+48V) to work. If you're using a condenser microphone, you'll need to engage the **+48V** switch. **LINE** and **HI-Z** should remain unpressed. You'll notice the top red LEDs blink whilst phantom power is applied. The audio will be muted for a few seconds. Once phantom power has been engaged, proceed with steps 2 and 3 like before.

CHANNEL 1**Keyboards and Other Line-Level Sources**

- Plug your keyboard/line-level source into **INPUT 1** or **INPUT 2** on the rear panel using a jack cable.
- Returning to the front panel, make sure that **+48V** is **not** pressed.
- Engage the **LINE** switch.
- Follow Steps 2 and 3 on the previous page to set your levels for recording.

CHANNEL 1**Electric Guitars and Basses (Hi-Impedance Sources)**

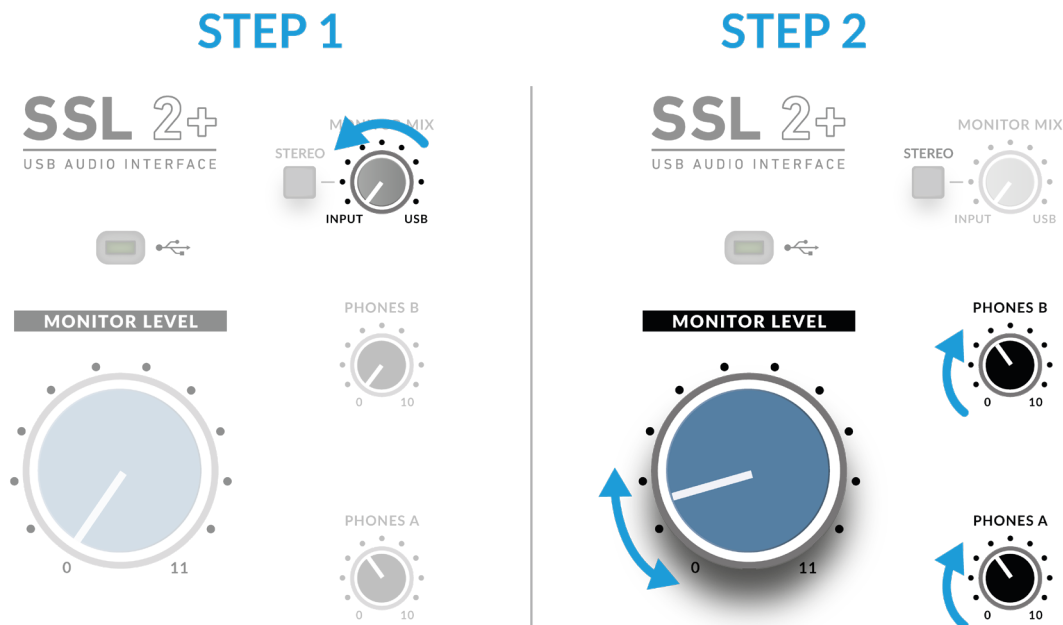
- Plug your guitar/bass into **INPUT 1** or **INPUT 2** on the rear panel using a jack cable.
- Returning to the front panel, make sure that **+48V** is **not** pressed.
- Engage both the **LINE** switch and the **HI-Z** switch.
- Follow Steps 2 and 3 on the previous page to set your levels for recording.

When recording an electric guitar or bass, engaging the **HI-Z** switch alongside the **LINE** switch changes the impedance of the input stage to better suit these types of sources. Specifically, it will help retain the high frequency detail.

Monitoring Your Inputs

Once you have selected the correct input source and have a healthy 3 green LEDs of signal coming in, you're ready to monitor your incoming source.

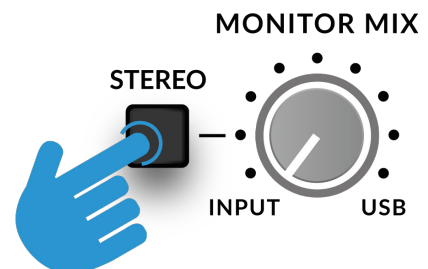
1. First, ensure that the **MONITOR MIX** control is rotated towards the side labelled **INPUT**.
2. Secondly, turn up the headphone output(s) that your headphones are connected to (**PHONES A / PHONES B**). If you want to listen through your monitor speakers, turn up the **MONITOR LEVEL** control.



CAUTION! If you are using a microphone, and monitoring the **INPUT** be careful about turning the **MONITOR LEVEL** control up because this can cause a feedback loop if the microphone is close to your speakers. Either keep the monitor control at a low-level or monitor through headphones.

When To Use The STEREO Switch

If you are recording a single source (a single microphone into one channel) or two independent sources (such as a microphone on the first channel and a guitar on the second channel), leave the **STEREO** switch unpressed, so that you hear the sources in the middle of the stereo image. However, when you are recording a stereo source such as the left and right sides of a keyboard (coming into channels 1 and 2 respectively), then pressing the **STEREO** switch will allow you to monitor the keyboard in true stereo, with **CHANNEL 1** being sent to the left side and **CHANNEL 2** being sent to the right side.



Setting Up Your DAW To Record

Now that you have chosen your input(s), set the levels and can monitor them, it's time to record into the DAW. The following image is taken from a Pro Tools | First session but the same steps will apply to any DAW. Please consult your DAW's User Guide for it's operations. If you have not already done so, please ensure that SSL 2+ is the selected Audio Device in your DAW's audio setup.



Setting Up Your DAW Tracks

- Set up new audio track(s) in your DAWs.
- Set the appropriate input on your DAW track(s): Input 1 = Channel 1, Input 2 = Channel 2.
- Record Arm the tracks you are recording.
- You are ready to hit record and do a take.

Low Latency - Using The Monitor Mix Control

What is Latency in relation to recording sound?

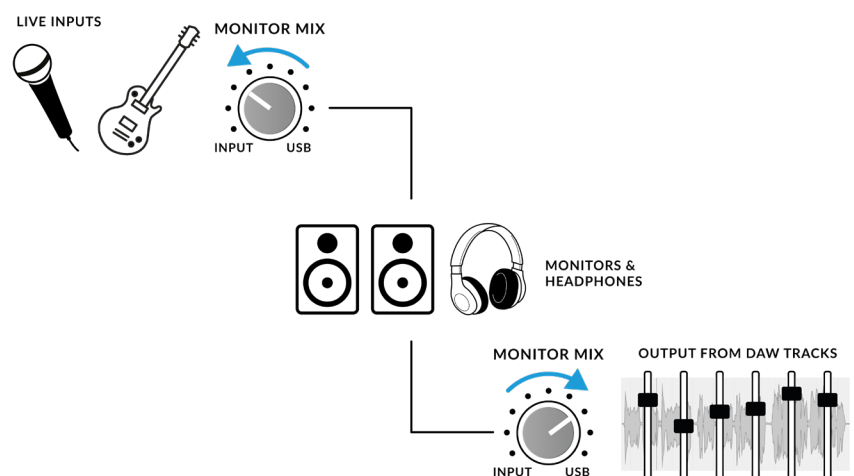
Latency is the time it takes for a signal to pass through a system and then be played out again. In the case of recording, latency can cause the performer significant issues as it results in them hearing a slightly delayed version of their voice or instrument, some time after they actually played or sung a note, which can be very off-putting when trying to record.

The main purpose of the **MONITOR MIX** control is to provide you with a way of hearing your inputs before they pass into the computer, with what we describe as 'low-latency'. It is, in fact, so low (under 1ms) that you will not hear any perceivable latency when playing your instrument or singing into the microphone.

How To Use The Monitor Mix Control When Recording & Playing Back

Often when recording, you'll need a way of balancing the input (microphone/instrument) against the tracks playing back from the DAW session.

Use the **MONITOR MIX** control to balance how much of your 'live' input you are hearing with low-latency in the monitors/headphones, against how much of the DAW tracks you have to perform against. Setting this correctly will help enable either yourself or the performer to produce a good take. To put it simply, turn the knob to the left to hear 'more me' and to the right for 'more backing track'.



Hearing Double?

When using the **MONITOR MIX** to monitor the live input, you'll need to mute the DAW tracks you are recording onto, so that you do not hear the signal twice.

When you want to listen back to what you have just recorded, you'll need to un-mute the track you have recorded onto, to hear your take.

This space is intentionally almost blank



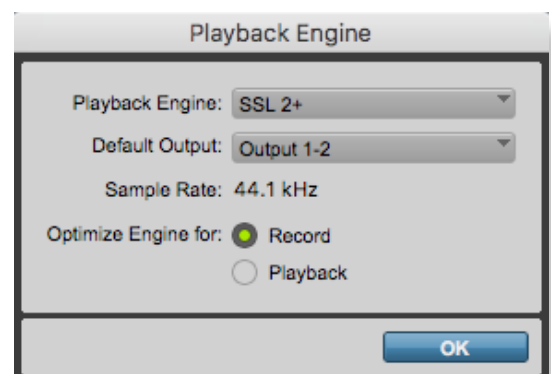
Record Tracks Muted

DAW Buffer Size

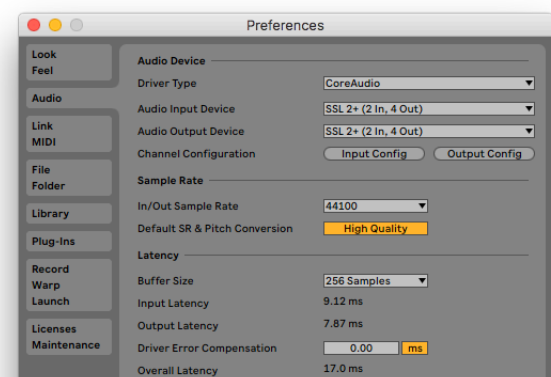
From time to time, you may need to alter the Buffer Size setting in your DAW. Buffer Size is the amount of samples stored/buffered, before being processed. The bigger the Buffer Size, the more time the DAW has to process the incoming audio, the smaller the Buffer Size, the less time the DAW has to process the incoming audio.

Generally speaking, *higher buffer sizes* (256 samples and above) are preferable when you have been working on a song for some time and have built up several tracks, often with processing plug-ins on them. You'll know when you need to increase the buffer size because your DAW will start producing playback error messages and is unable to playback, or it plays back audio with unexpected pops and clicks.

Lower buffer sizes (16, 32 and 64 samples) are preferable when you want to record and monitor processed audio back from the DAW with as little latency as possible. For instance, you want to plug an electric guitar directly into your SSL 2+, put it through a guitar amp simulator plug-in (like Native Instruments' Guitar Rig Player) and then monitor that 'affected' sound whilst you record, instead of just listening to the 'dry' input signal with the **Monitor Mix**.



Pro Tools | First offers 'Record' (low buffer size) or 'Playback' (larger) Buffer Sizes



Ableton Live Lite Example set to 256 Samples

Sample Rate

What is meant by Sample Rate?

All musical signals coming into and out of your SSL 2+ USB audio interface need to be converted between analogue and digital. Sample rate is a measure of how many 'snapshots' are taken in order to build a digital 'picture' of an analogue source being captured into the computer, or deconstruct a digital picture of an audio track to play back out of your monitors or headphones.

The most common sample rate that your DAW will default to is 44.1 kHz, which means that the analogue signal is being sampled 44,100 times per second. SSL 2+ supports all major sample rates including 44.1 kHz, 48 kHz, 88.2 kHz, 96 kHz, 176.4 kHz and 192 kHz.

Do I need to change the Sample Rate?

The pros and cons of using higher sample rates are beyond the scope of this User Guide but in general, the most common sample rates of 44.1 kHz and 48 kHz are still what many people choose to produce music at, so this is the best place to start.

One reason to consider increasing the sample rate you work at (e.g. to 96 kHz) is that it will lower the overall latency introduced by your system, which could be handy if you need to monitor guitar amp simulator plug-ins or lots of virtual instruments through your DAW. However, the trade-off of recording at higher sample rates is that it requires more data to be recorded onto the computer, so this results in much more hard-drive space being taken up by the Audio Files folder of your project.

How do I change the Sample Rate?

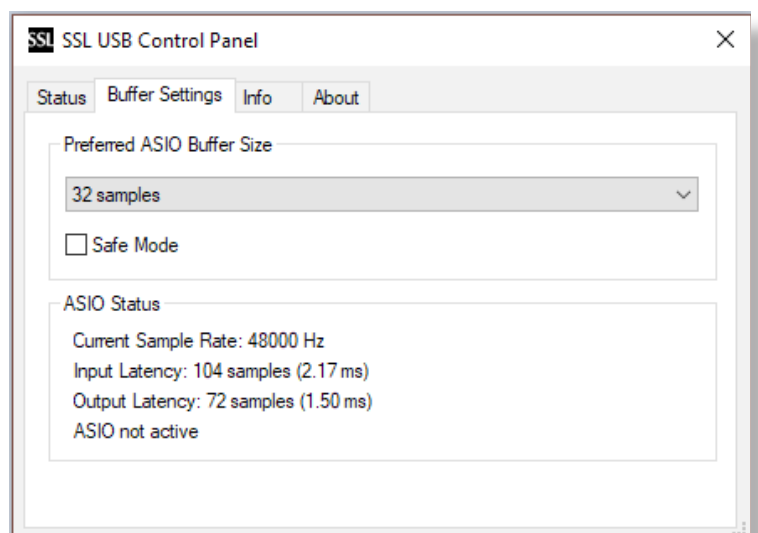
You do this in your DAW. Some DAW's allow you to change the sample rate after you have created a session - Ableton Live Lite for instance allows this. Some require you to set the sample rate at the point at which you create the session, like Pro Tools | First.

SSL USB Control Panel (Windows Only)

If you're working on Windows and have installed the USB Audio Driver required to make the unit operational, you will have noticed that as part of the installation the SSL USB Control Panel will be installed onto your computer. This Control Panel will report details such as what Sample Rate and Buffer Size your SSL 2+ is running at. Please note that both Sample Rate and Buffer size will be taken control of by your DAW when it is opened.

Safe Mode

One aspect you can control from the SSL USB Control Panel is the tickbox for Safe Mode on the 'Buffer Settings' tab. Safe mode defaults to ticked but can be unticked. Unticking Safe Mode will reduce the overall Output Latency of the device, which may be useful if you are looking to achieve the lowest possible roundtrip latency in your recording. However, unticking this may cause unexpected audio clicks/pops if your system is under strain.

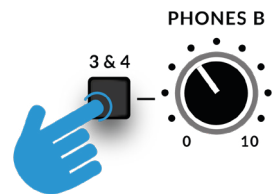


Using PHONES B

Creating A Separate Mix in Pro Tools | First

One of the great things about SSL 2+ is that it has 2 headphone outputs, with independent level controls for **PHONES A** and **PHONES B**.

By default, **PHONES B** is a duplicate of whatever is being listened to on **PHONES A**, ideal for when you and the performer want to listen to the same mix. However, using the switch labelled **3&4** next to **PHONES B**, you can create a different headphone mix for the performer. Pressing the **3&4** switch means that **PHONES B** is now sourcing from USB Output Stream 3-4, instead of 1-2.



Step 1: Press **3&4** switch

Steps to Create A Separate Headphone Mix On Phones B

1. Press the **3&4** switch on **PHONES B**.
2. In your DAW, create sends on each track and set them to 'Output 3-4'. Make them pre-fader.
3. Use the send levels to create a mix for the performer. If you're using the **MONITOR MIX** control, adjust this so that the performer can hear their preferred balance of live input to USB playback.
4. Once the performer is happy, use the main DAW faders (set on Outputs 1-2), so adjust the mix you (the engineer/producer) are listening to on **PHONES A**.
5. Creating Master tracks for Output 1-2 and Output 3-4 may be helpful to keep control of levels in the DAW.



Step 2&3: DAW Sends set to 'Output 3-4' for **PHONES B**
Send levels control output of each track, set to pre-fader

Step 4: DAW Tracks 'Output 1-2' for **PHONES A**
Levels controlled with main faders

Step 5: Master Outputs Tracks for 'Output 1-2' and 'Output 3-4'



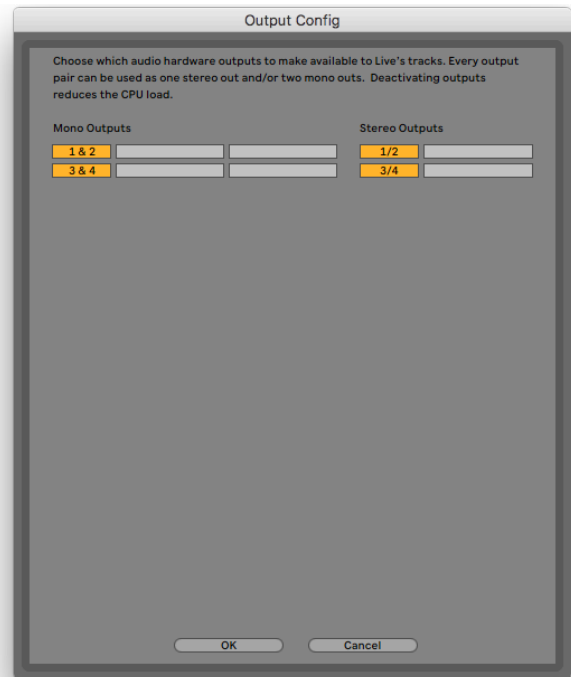
Example of Pro Tools | First Mixer Window Set Up For 2 Different Headphone Mixes

Using Phones B 3&4 Switch To Cue Up Tracks In Ableton Live Lite

The ability to switch **PHONES B** to pickup USB Stream 3-4 directly from the front panel is really helpful for Ableton Live Lite users who like to cue up tracks when performing a live set, without the audience hearing it.

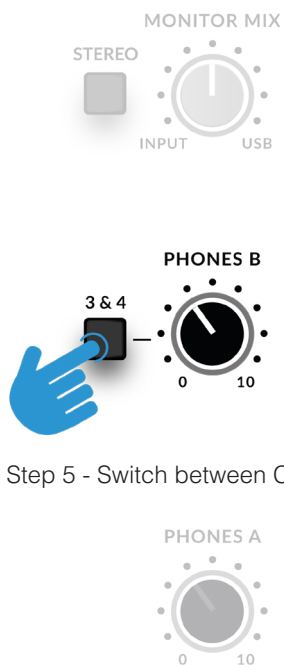
Follow these steps:

1. Ensure that Outputs 3-4 are enabled in Ableton Live Lite's 'Preferences' > 'Output Config' - Outputs 3-4 boxes should be orange.
2. On the Master Track, set 'Cue Out' to '3/4'.
3. On the Master Track, click the 'Solo' box so that it turns into a 'Cue' box.
4. To cue up a track press the blue Headphones symbol on the desired track and then launch a clip on that track. To make sure that the audience does not hear you cue'ing track in the main master output 1-2, mute the track first, or, pull the fader all the way down.
5. Use the **3&4** switch to switch **PHONES B** between what you are cueing up and what the audience are hearing.

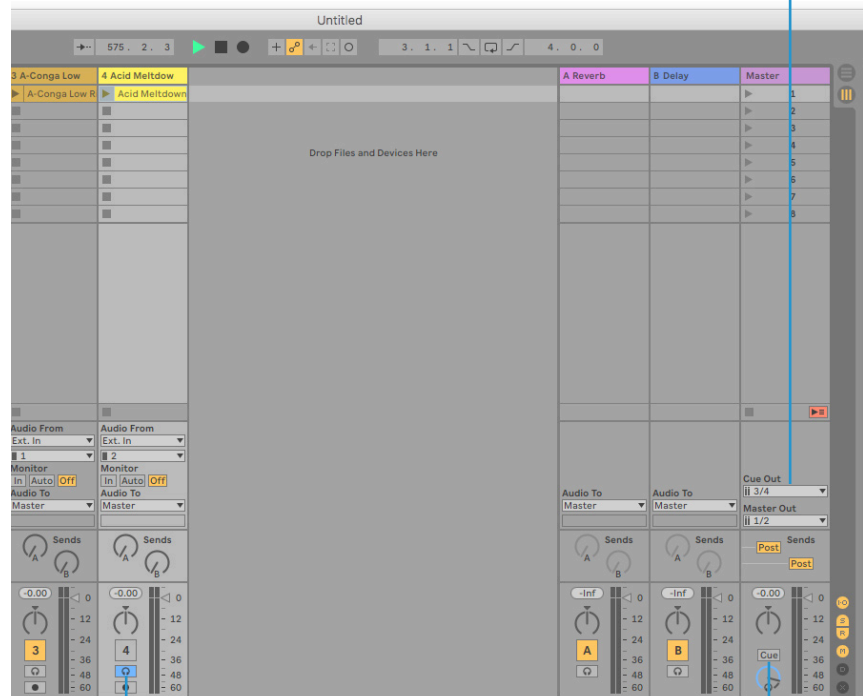


Step 1 - Ensure Outputs 3&4 are enabled

Step 2 - 'Cue Out' set to 3/4



Step 5 - Switch between Cue and Main Mix



Step 3 - Click this button so that it changes from 'Solo' to 'Cue'

Specifications

Audio Performance Specifications

Unless specified otherwise, default test configuration:

Sample Rate: 48kHz, Bandwidth: 20 Hz to 20 kHz

Measurement device output impedance: 40 Ω (20 Ω unbalanced)

Measurement device input impedance: 200 k Ω (100 k Ω unbalanced)

Unless otherwise quoted all figures have a tolerance of ± 0.5 dB or 5%

Microphone Inputs

Frequency Response	± 0.1 dB
Dynamic Range (A-Weighted)	110.5 dB
THD+N (@ 1kHz)	< 0.0015 % @ -8 dBFS, < 0.005 % @ -1 dBFS
EIN (A-Weighted, 150 Ω termination)	-130.5 dBu
Maximum Input Level	+5.5 dBu
Gain Range	62 dB
Input Impedance	1.2 k Ω

Line Inputs

Frequency Response	± 0.05 dB
Dynamic Range (A-Weighted)	110.5 dB
THD+N (@ 1kHz)	< 0.0015 % @ -8 dBFS, < 0.005 % @ -1 dBFS
Maximum Input Level	+24 dBu
Gain Range	62 dB
Input Impedance	10 k Ω

Instrument Inputs

Frequency Response	± 0.05 dB
Dynamic Range (A-Weighted)	110.5 dB
THD+N (@ 1kHz)	< 0.0015 % @ -8 dBFS, < 0.005 % @ -1 dBFS
Maximum Input Level	+15 dBu
Gain Range	62 dB
Input Impedance	1 M Ω

Monitor Outputs (Balanced)

Frequency Response	± 0.05 dB
Dynamic Range (A-Weighted)	112 dB
THD+N (@ 1kHz)	< 0.0012% @ -8 dBFS, < 0.002 % @ -1 dBFS
Maximum Output Level	+12.5 dBu
Output Impedance	1 Ω

Unbalanced Outputs

Frequency Response	± 0.05 dB
Dynamic Range (A-Weighted)	112 dB (1-2), 110 dB (3-4)
THD+N (@ 1kHz)	< 0.0015% @ -8 dBFS, < 0.0025% @ -1 dBFS
Maximum Output Level	+6.5 dBu
Output Impedance	< 1 Ω

Headphone Outputs

Frequency Response	± 0.05 dB
Dynamic Range	111 dB
THD+N (@ 1kHz)	< 0.0015% @ -8 dBFS, < 0.0020% @ -1 dBFS
Maximum Output Level	+10 dBu
Output Impedance	10 Ω

Digital Audio

Supported Sample Rates	44.1 kHz, 48 kHz, 88.2 kHz, 96 kHz, 176.4 kHz, 192 kHz
Clock Source	Internal
USB	USB 2.0
Low-Latency Monitor Mix	Input to Output: < 1ms
Roundtrip Latency at 96 kHz	Windows 10, Reaper: < 4ms (Safe Mode Off) Mac OS, Reaper: < 5.2ms

Physical

Analogue Inputs 1&2

Connectors	XLR 'Combo' for Microphone/Line/Instrument on rear panel
Input Gain Control	Via front panel
Microphone/Line/Instrument Switching	Via front panel switches
Phantom Power	Via front panel switches
Legacy 4K Analogue Enhancement	Via front panel switches

Analogue Outputs

Connectors	1/4" (6.35 mm) TRS jacks, RCA sockets on rear panel
Stereo Headphone Outputs	1/4" (6.35 mm) TRS jacks on rear panel
Outputs 1L / 2R Level Control	Via front panel
Outputs 3 & 4 Level Control	None
Monitor Mix Input - USB Blend	Via front panel
Monitor Mix - Stereo Input	Via front panel
Headphones Level Control	Via front panel
Headphones B 3&4 Source Selection	Via front panel

Rear Panel Miscellaneous

USB	1 x USB 2.0, 'C' Type Connector
MIDI	2 x 5-pin DIN Sockets
Kensington Security Slot	1 x K-Slot

Front Panel LEDs

Input Metering	Per Channel - 3 x green, 1 x amber, 1 x red
Legacy 4K Analogue Enhancement	Per Channel - 1 x red
USB Power	1 x green

Weight & Dimensions

Width x Depth x Height	234mm x 157mm x 70mm (including knob heights)
Weight	900g
Box Dimensions	265mm x 198 x 104mm
Boxed Weight	1.20kg

Troubleshooting & FAQs

Frequently Asked Questions and additional support contacts can be found on the Solid State Logic Website at:

www.solidstatellogic.com/support

Important Safety Notices

General Safety

- Read these instructions.
- Keep these instructions.
- Heed all warnings.
- Follow all instructions.
- Do not use this apparatus near water.
- Clean only with dry cloth.
- Do not install near any heat sources such as radiators, heat registers, stoves or other apparatus (including amplifiers) that produce heat.
- Unplug this apparatus during lightning storms or when unused for long periods of time.
- Install in accordance with the manufacturer's instructions.
- Only use attachments/accessories recommended by the manufacturer.
- Refer all servicing to qualified service personnel. Servicing is required when the apparatus has been damaged in any way, such as liquid has been spilled or objects have fallen into the apparatus, the apparatus has been exposed to rain or moisture, does not operate normally, or has been dropped.
- Do NOT modify this unit, alterations may affect performance, safety and/or international compliance standards.
- Ensure that no strain is placed on any cables connected to this apparatus. Ensure that all such cables are not placed where they can be stepped on, pulled or tripped over.
- SSL does not accept liability for damage caused by maintenance, repair or modification by unauthorised personnel.

WARNING: To prevent possible hearing damage, do not listen at high volume levels for long periods. As a guide to setting the volume level, check that you can still hear your own voice, when speaking normally while listening with the headphones.

EU Compliance



SSL 2 and SSL 2+ Audio Interfaces are CE compliant. Note that any cables supplied with SSL equipment may be fitted with ferrite rings at each end. This is to comply with the current regulations and these ferrites should not be removed.

Electromagnetic Compatibility

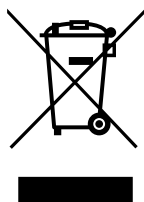
EN 55032:2015, Environment: Class B, EN 55103-2:2009, Environments: E1 - E4.

Audio input and output ports are screened cable ports and any connections to them should be made using braid-screened cable and metal connector shells in order to provide a low impedance connection between the cable screen and the equipment.

RoHS notice

Solid State Logic complies with and this product conforms to European Union's Directive 2011/65/EU on Restrictions of Hazardous Substances (RoHS) as well as the following sections of California law which refer to RoHS, namely sections 25214.10, 25214.10.2, and 58012, Health and Safety Code; Section 42475.2, Public Resources Code.

Instructions for disposal of WEEE by users in the European Union



The symbol shown here, which is on the product or on its packaging, indicates that this product must not be disposed of with other waste. Instead, it is the user's responsibility to dispose of their waste equipment by handing it over to a designated collection point for recycling of waste electrical and electronic equipment. The separate collection and recycling of your waste equipment at the time of disposal will help to conserve natural resources and ensure that it is recycled in a manner that protects human health and the environment. For more information about

where you can drop off your waste equipment for recycling, please contact your local city office, your household waste disposal service or where you purchased the product.

FCC Compliance

This device complies with part 15 of the FCC Rules. Operation is subject to the following two conditions: (1) This device may not cause harmful interference, and (2) this device must accept any interference received, including interference that may cause undesired operation.

For USA – to the user

- **Do not modify this unit!** This product, when installed as indicated in the instructions contained in the installation manual, meets FCC requirements.
- **Important:** This product satisfies FCC regulations when high quality shielded cables are used to connect with other equipment. Failure to use high quality shielded cables or to follow the installation instructions may cause magnetic interference with appliances such as radios and televisions and will void your FCC authorisation to use this product in the USA.
- **Note:** This equipment has been tested and found to comply with the limits for a Class B digital device, pursuant to part 15 of the FCC Rules. These limits are designed to provide reasonable protection against harmful interference in a residential environment. This equipment generates, uses and can radiate radio frequency energy and, if not installed and used in accordance with the instructions, may cause harmful interference to radio communications. However, there is no guarantee that interference will not occur in a particular installation. If this equipment does cause harmful interference to radio or television reception, which can be determined by turning the equipment off and on, the user is encouraged to try to correct the interference by one or more of the following measures:
 - Reorient or relocate the receiving antenna.
 - Increase the separation between the equipment and receiver.
 - Connect the equipment into an outlet on a circuit different from that to which the receiver is connected.
 - Consult the dealer or an experienced radio/TV technician for help.

Industry Canada Compliance

This Class B digital apparatus complies with Canadian ICES-003. Cet appareil numérique de la classe B est conforme à la norme NMB-003 du Canada.

Evaluation of apparatus based on altitude not exceeding 2000m. There may be some potential safety hazard if the apparatus is operated at altitude exceeding 2000m.



Evaluation of apparatus based on temperate climate conditions only. There may be some potential safety hazard if the apparatus is operated in tropical climate conditions.



Environmental

Temperature: Operating: +1 to 40°C Storage: -20 to 50°C

