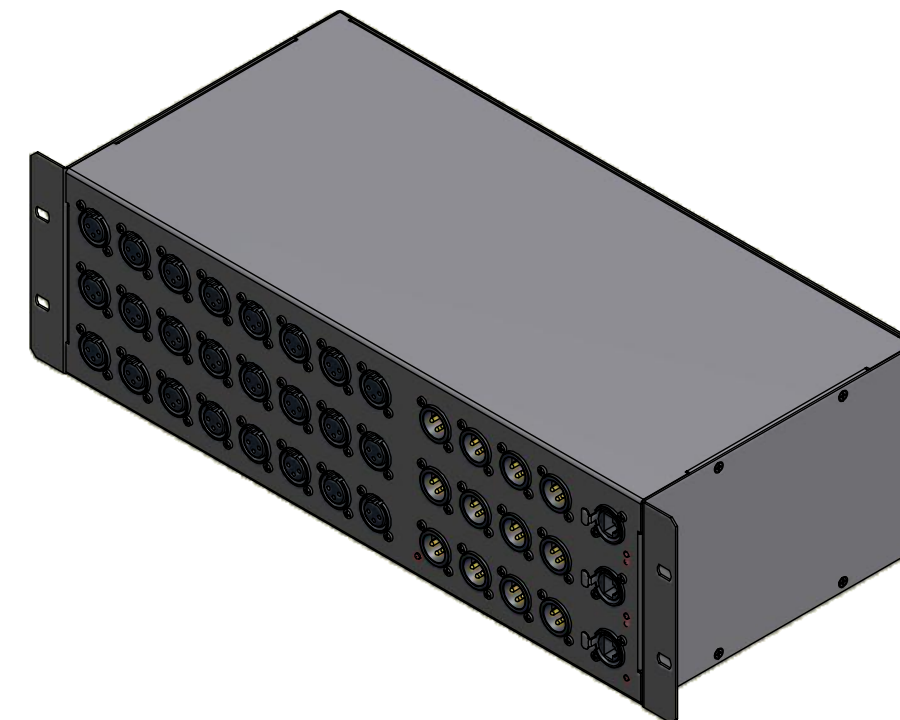
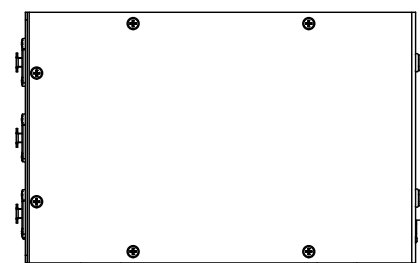
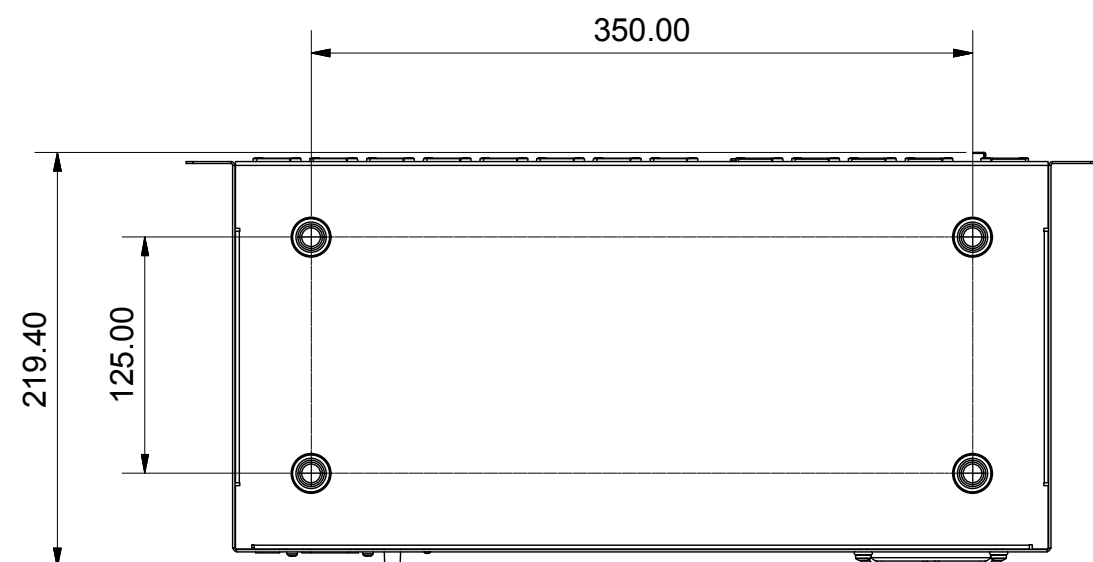
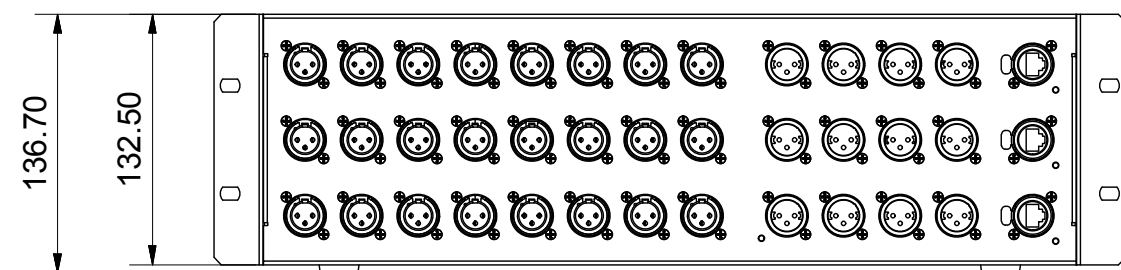
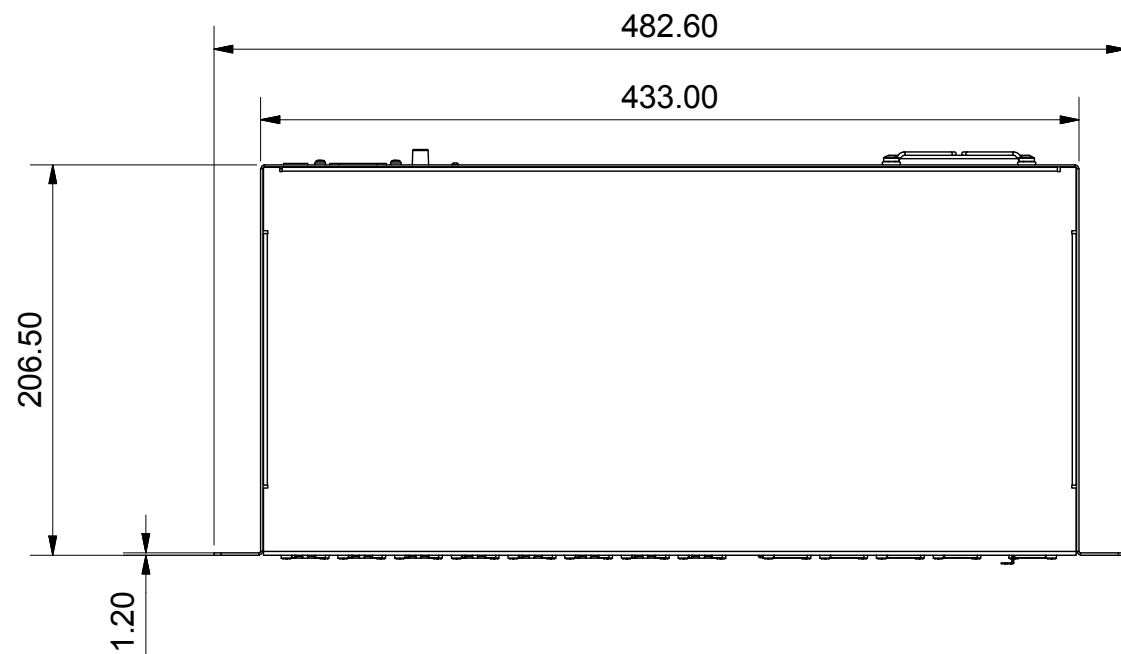


# GLD-AR2412 WEIGHTS AND MEASURES



### GLD AR2412 - without box

Width 482.6mm (19")  
 Depth 219.4mm (8.6")  
 Height 136.7mm (5.4")  
 Weight 5kg (11lbs)

### GLD AR2412 - including box

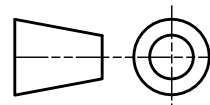
Width 595mm (23.4")  
 Depth 342mm (13.5")  
 Height 250mm (9.8")  
 Weight 6.4kg (14.1lbs)

DO NOT USE FOR PRODUCTION!

#### REVISION HISTORY

REV	DESCRIPTION	DATE	APPROVED
A	ORIGIN	21/10/2011	ALEXMO

THIRD ANGLE PROJECTION



MATERIAL:

All materials to be compliant with The Restriction of Hazardous Substances (ROHS) Directive (2002/95/EC)

TOLERANCES U O S:  
 GENERAL ± 0.25 HOLE CENTRES ± 0.10  
 HOLE SIZES ± 0.05 ANGULAR DIMS ± 0.50°

FINISH:

DRAWING  
 MAIN ASSY GLD-AR2412

UNIT GLD

PART  
 No 004-195

DRAWING No  
 Weights and measures GLD AR-2412

SHEET  
 1 of 1

ISSUE  
 A

**ALLEN & HEATH Ltd.**

KERNICK INDUSTRIAL ESTATE  
 PENRYN CORNWALL TR10 9LU  
 TELEPHONE 01326 372070  
 FACSIMILE 01326 370153