



SCRIM JIM<sup>®</sup>  
CINE

## QUICK START GUIDE

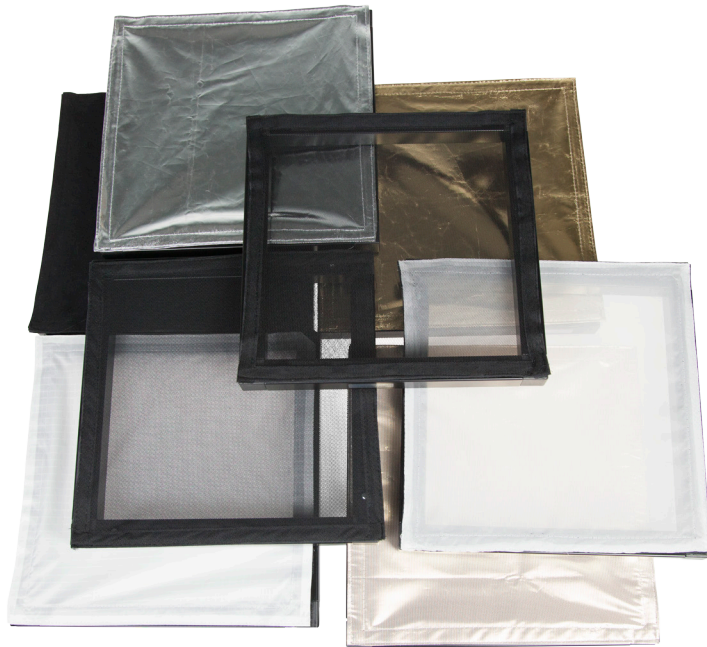
# Table of Contents

## Usage & Details

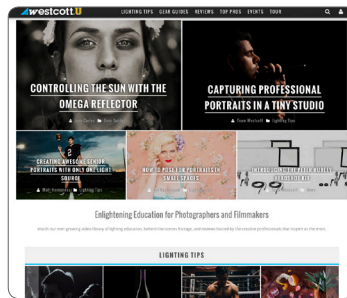
Warranty.....	3
Frame Assembly.....	4
Attaching Fabrics.....	5
Frame Mounting.....	6
Build Options.....	7

## Components & Accessories

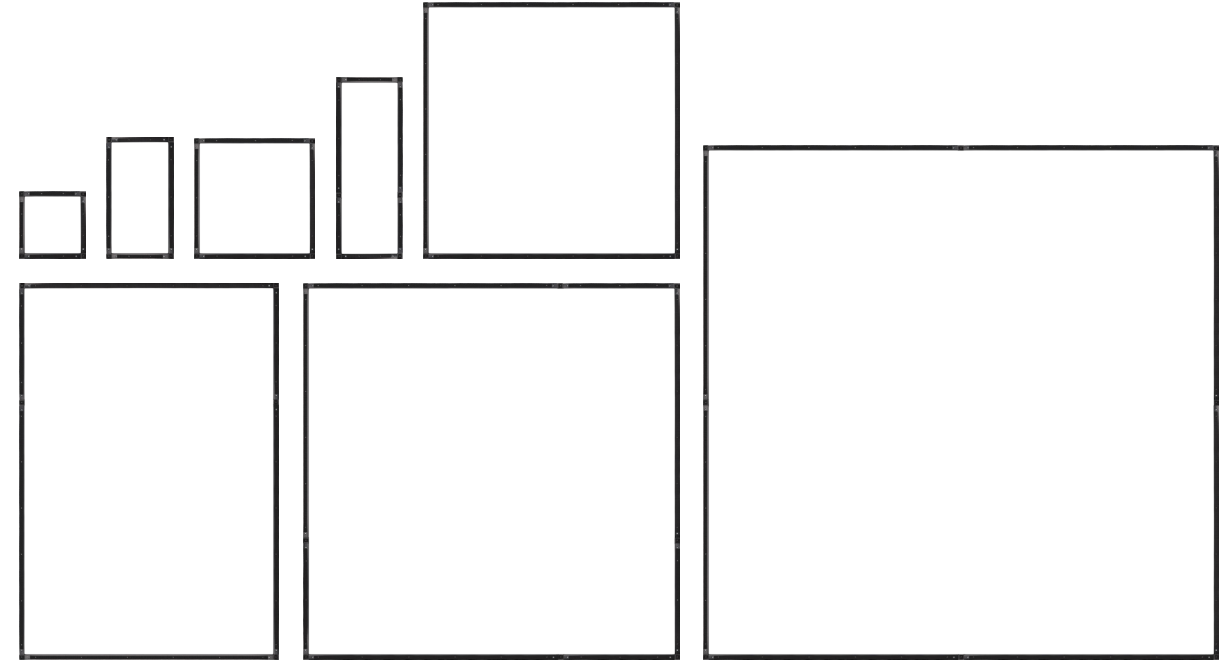
Accessories .....	16
Framework.....	17
Fabric Options.....	18
theC47™ Kits.....	21



For lighting tips, instructional videos, inspiration, and more, visit [WestcottU.com](http://WestcottU.com).



# Warranty



## One-Year Limited Warranty

Westcott’s warranty obligations for this product are limited to the terms set forth below: The F.J. Westcott Co. (“Westcott”) warrants this Westcott branded product against defects in materials and workmanship under normal use for a period of ONE (1) YEAR from the date of retail purchase by the original end-user purchaser (“Warranty Period”). If a defect arises and a valid claim is received within the Warranty Period, at its option and to the extent permitted by law, Westcott will either (1) repair the defect at no charge, using new or refurbished replacement parts, or (2) exchange the product with a product that is new or which has been manufactured from new or serviceable used parts and is at least functionally equivalent to the original product. This Limited Warranty applies only to products manufactured by or for Westcott that can be identified by the “Westcott” trademark, trade name, or logo affixed to them.

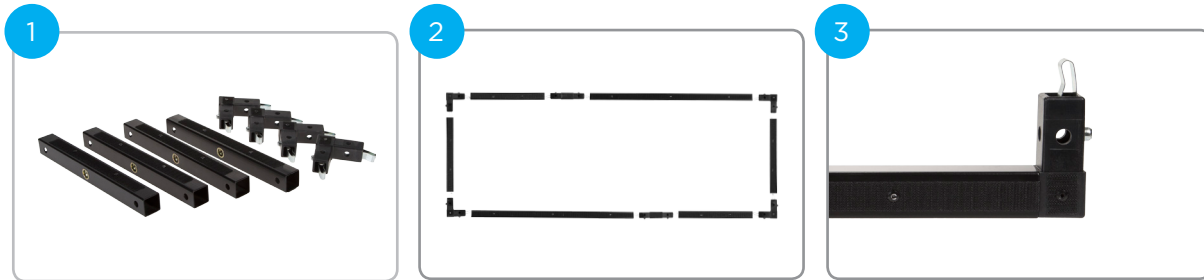
This warranty does not apply: (a) to damage caused by accident, abuse, misuse, flood, fire, earthquake or other external causes; (b) to damage caused by operating the product outside the permitted or intended uses described by Westcott; (c) to a product or part that has been modified to alter functionality or capability without the written permission of Westcott; or (d) to cosmetic damage, including but not limited to scratches, dents and broken plastic.

Please contact Westcott’s Repair Department for a Return Authorization Number “RMA” prior to requesting warranty service. This RMA must be clearly written on the outside of the box to the left of the shipping label. Items sent in without pre-authorization or that do not fall under the ONE (1) YEAR limited warranty will be returned at the expense of the sender.

Repair Dept.: 800-886-1689 / 419-243-7311 (International)  
 E-Mail: [info@fjwestcott.com](mailto:info@fjwestcott.com) Subject: Attn: Repair Dept.  
 Shipping: F.J. Westcott Co, 1425-B Holland Rd, Maumee, OH 43537

# Frame Assembly

Scrim Jim Cine frame tubes, corner connectors, straight connectors, and fabrics are packaged unassembled and may be purchased separately or in complete kits. Visit page 17 to see all available components.



## 1 Locate Components

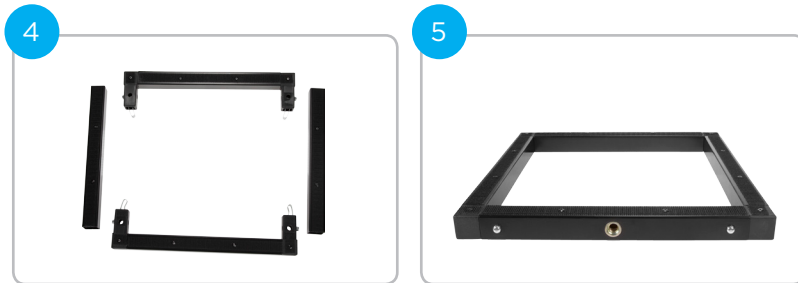
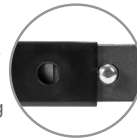
Begin by locating the included Scrim Jim Cine frame tubes and connectors. Refer to the Build Options section starting on page 7 for configuration options and required components.

## 2 Arrange Components

On a flat surface, position frame tubes and connectors next to each other in the proper order. Align the connectors' positive-locking buttons with the button receptacles on the frame tubes.

## 3 Connect Frame Tubes

Connect any included straight frame connectors with their corresponding frame tubes first. Next, connect each end of a full frame tube to corner connectors. Press and hold the positive-locking button and slide the frame tube into place. The button will 'click' when connected properly.



## 4 Repeat Corner Connections

Connect the open ends of the parallel frame tubes with 2 corner connectors.

## 5 Frame Creation

Connect the 2 remaining straight frame tubes to the remaining open ends of the connected corner connectors to create your frame.

# Attaching Fabrics

Scrim Jim Cine fabrics are available in a wide variety of materials and sizes to control virtually any lighting. These fabrics are easily attached to any corresponding Scrim Jim Cine frame. See pages 18-20 for all available fabrics.



## 1 Select a Fabric

Locate the preferred Scrim Jim Cine fabric that you want to attach to your assembled frame.

## 2 Attach Preferred Fabric

Place the fabric's loop tape edge onto the frame's hook tape. Press to secure.

## 3 Secure Fabric Corners

Place the fabric's loop tape tabs around the frame and attach to the rear of the frame (for sizes 4' x 4' and larger).



# Frame Mounting

A Scrim Jim Cine frame can be mounted to a light stand or c-stand with a Center Jaw Vise Grip (#1980), or using a Universal Stud (#8539) and Dual-Socket Magic Arm (#2199) or Grip Head (#1881).

See page 16 or visit [fjwestcott.com](http://fjwestcott.com) for product details.

## Mounting with Center Jaw Vise Grip



### 1 Attach Vise Grip to Mount

Securely mount the Vise Grip's shaft in the open socket of the Dual-Socket Magic Arm or Grip Head while attached to a light stand or c-stand.

### 2 Loosen the Wing Nut

Loosen the Center Jaw Vise Grip's wing nut and separate the vise grip's center jaws.

### 3 Secure the Frame

Place your Scrim Jim Cine frame between the jaws, ensuring that the frame is aligned with the jaws' grip material and tighten the wing nut to secure.

## Mounting with Universal Stud



### 1 Attach Mount to Stand

Attach the Dual-Socket Magic Arm or Grip Head to light stand or c-stand.

### 2 Attach Stud to Frame

Locate the 3/8"-16 receptacle on your Scrim Jim Cine frame and screw the 3/8"-16-end of the Universal Stud into this receptacle.

### 3 Attach Stud to Mount

Place this mounted stud into the open socket of the Dual-Socket Magic Arm or Grip Head and tighten knob to secure.

# Build Options: 1' x 1' and 1' x 2'

See page 17-19 or visit [fjwestcott.com](http://fjwestcott.com) for additional frame and fabric options.

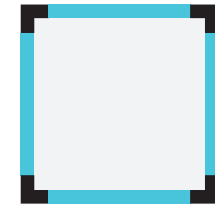
## KEY

10" TUBE #2000

22" TUBE #2020

46" TUBE #2022

## 1' x 1' Cine Frames



### 1' x 1' Frame Kit #1885

(4) 10" TUBES - #2000  
(4) 2D CORNERS - #2024

### Fabrics (pages 18-20)



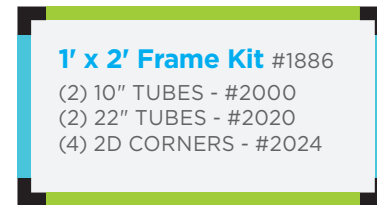
### Mounts (page 16)



### Flex (page 23)

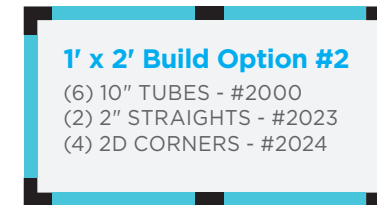


## 1' x 2' Cine Frames



### 1' x 2' Frame Kit #1886

(2) 10" TUBES - #2000  
(2) 22" TUBES - #2020  
(4) 2D CORNERS - #2024



### 1' x 2' Build Option #2

(6) 10" TUBES - #2000  
(2) 2" STRAIGHTS - #2023  
(4) 2D CORNERS - #2024

### Fabrics (pages 18-20)



### Mounts (page 16)



### Flex (page 23)



# Build Options: 1' x 3'

See page 17-19 or visit [fjwestcott.com](http://fjwestcott.com) for additional frame and fabric options.

## KEY

10" TUBE #2000

22" TUBE #2020

46" TUBE #2022

## 1' x 3' Cine Frames

**1' x 3' Frame Kit #1887**  
 (4) 10" TUBES - #2000  
 (2) 22" TUBES - #2020  
 (2) 2" STRAIGHTS - #2023  
 (4) 2D CORNERS - #2024

**1' x 3' Build Option #2**  
 (8) 10" TUBES - #2000  
 (4) 2" STRAIGHTS - #2023  
 (4) 2D CORNERS - #2024

### Fabrics (pages 18-20)



### Mounts (page 16)



### Flex (page 23)



# Build Options: 2' x 2'

See page 17-19 or visit [fjwestcott.com](http://fjwestcott.com) for additional frame and fabric options.

## KEY

10" TUBE #2000

22" TUBE #2020

46" TUBE #2022

## 2' x 2' Cine Frames

**2' x 2' Frame Kit #1889**  
 (4) 22" TUBES - #2020  
 (4) 2D CORNERS - #2024

**2' x 2' Build Option #2**  
 (8) 10" TUBES - #2000  
 (4) 2" STRAIGHTS - #2023  
 (4) 2D CORNERS - #2024

**2' x 2' Build Option #3**  
 (4) 10" TUBES - #2000  
 (2) 22" TUBES - #2020  
 (2) 2" STRAIGHTS - #2023  
 (4) 2D CORNERS - #2024

### Fabrics (pages 18-20)



### Mounts (page 16)



### Flex (page 23)



# Build Options: 4' x 4'

See page 17-19 or visit [fjwestcott.com](http://fjwestcott.com) for additional frame and fabric options.

## 4' x 4' Cine Frames

<p><b>4' x 4' Frame Kit #1897</b>                  (4) 46" TUBES - #2022                  (4) 2D CORNERS - #2024</p>	<p><b>4' x 4' Build Option #2</b>                  (8) 22" TUBES - #2020                  (4) 2" STRAIGHTS - #2023                  (4) 2D CORNERS - #2024</p>	<p><b>4' x 4' Build Option #3</b>                  (16) 10" TUBES - #2000                  (12) 2" STRAIGHTS - #2023                  (4) 2D CORNERS - #2024</p>
------------------------------------------------------------------------------------------------------------------------------	----------------------------------------------------------------------------------------------------------------------------------------------------------------------------	------------------------------------------------------------------------------------------------------------------------------------------------------------------------------

**KEY**

- 10" TUBE #2000
- 22" TUBE #2020
- 46" TUBE #2022

### Fabrics (pages 18-20)

1/4-STOP SILK	3/4-STOP DIFFUSER	FULL-STOP DIFFUSER	1 1/4-STOP DIFFUSER	UNBLEACHED/BLACK
1/4-STOP GRID CLOTH	1/2-STOP GRID CLOTH	SINGLE NET	DOUBLE NET	FLOPPY CUTTER
SUNLIGHT/SILVER BOUNCE	SILVER/WHITE BOUNCE	GOLD/WHITE BOUNCE	BLACK BLOCK	

### Mounts (page 16)

CENTER JAW VISE GRIP	GRIP HEAD
UNIVERSAL STUD	DUAL-SOCKET MAGIC ARM

# Build Options: 4' x 6'

See page 17-19 or visit [fjwestcott.com](http://fjwestcott.com) for additional frame and fabric options.

## 4' x 6' Cine Frames

<p><b>4' x 6' Frame Kit #1820</b>                  (4) 46" TUBES - #2022                  (2) 22" TUBES - #2020                  (2) 2" STRAIGHTS - #2023                  (4) 2D CORNERS - #2024</p>	<p><b>4' x 6' Build Option #2</b>                  (10) 22" TUBES - #2020                  (6) 2" STRAIGHTS - #2023                  (4) 2D CORNERS - #2024</p>	<p><b>4' x 6' Build Option #3</b>                  (2) 46" TUBES - #2022                  (6) 22" TUBES - #2020                  (4) 2" STRAIGHTS - #2023                  (4) 2D CORNERS - #2024</p>
-----------------------------------------------------------------------------------------------------------------------------------------------------------------------------------------------------------------------	-----------------------------------------------------------------------------------------------------------------------------------------------------------------------------	-----------------------------------------------------------------------------------------------------------------------------------------------------------------------------------------------------------------------

**KEY**

- 10" TUBE #2000
- 22" TUBE #2020
- 46" TUBE #2022

### Fabrics (pages 18-20)

1/4-STOP SILK	3/4-STOP DIFFUSER	FULL-STOP DIFFUSER	1 1/4-STOP DIFFUSER	UNBLEACHED/BLACK
1/4-STOP GRID CLOTH	1/2-STOP GRID CLOTH	SINGLE NET	DOUBLE NET	
SUNLIGHT/SILVER BOUNCE	SILVER/WHITE BOUNCE	GOLD/WHITE BOUNCE	BLACK BLOCK	

### Mounts (page 16)

CENTER JAW VISE GRIP	GRIP HEAD
----------------------	-----------

# Build Options: 6' x 6'

See page 17-19 or visit [fjwestcott.com](http://fjwestcott.com) for additional frame and fabric options.

## KEY

10" TUBE #2000

22" TUBE #2020

46" TUBE #2022

## 6' x 6' Cine Frames

<p><b>6' x 6' Frame Kit #1833</b>                  (4) 46" TUBES - #2022                  (4) 22" TUBES - #2020                  (4) 2" STRAIGHTS - #2023                  (4) 2D CORNERS - #2024</p>	<p><b>6' x 6' Build Option #2</b>                  (12) 22" TUBES - #2020                  (8) 2" STRAIGHTS - #2023                  (4) 2D CORNERS - #2024</p>	<p><b>6' x 6' Build Option #3</b>                  (3) 46" TUBES - #2022                  (6) 22" TUBES - #2020                  (5) 2" STRAIGHTS - #2023                  (4) 2D CORNERS - #2024</p>
-----------------------------------------------------------------------------------------------------------------------------------------------------------------------------------------------------------------------	-----------------------------------------------------------------------------------------------------------------------------------------------------------------------------	-----------------------------------------------------------------------------------------------------------------------------------------------------------------------------------------------------------------------

### Fabrics (pages 18-20)

1/4-STOP SILK	3/4-STOP DIFFUSER	FULL-STOP DIFFUSER	1 1/4-STOP DIFFUSER	UNBLEACHED/BLACK
1/4-STOP GRID CLOTH	1/2-STOP GRID CLOTH	SINGLE NET	DOUBLE NET	
SUNLIGHT/SILVER BOUNCE	SILVER/WHITE BOUNCE	GOLD/WHITE BOUNCE	BLACK BLOCK	

### Mounts (page 16)

CENTER JAW VISE GRIP    GRIP HEAD

*For compatibility with original 71" x 71" Scrim Jim fabrics.*

**6' x 6' Build Option with 1" Straight Connectors**  
 (4) 46" TUBES - #2022  
 (4) 22" TUBES - #2020  
 (4) 1" STRAIGHTS - #2029  
 (4) 2D CORNERS - #2024

# Build Options: 8' x 8'

See page 17-19 or visit [fjwestcott.com](http://fjwestcott.com) for additional frame and fabric options.

## KEY

10" TUBE #2000

22" TUBE #2020

46" TUBE #2022

## 8' x 8' Cine Frames

**8' x 8' Frame Kit #1834**  
 (8) 46" TUBES - #2022  
 (4) 2" STRAIGHTS - #2023  
 (4) 2D CORNERS - #2024

### Fabrics (pages 18-20)

1/4-STOP SILK	3/4-STOP DIFFUSER	FULL-STOP DIFFUSER	1 1/4-STOP DIFFUSER
1/4-STOP GRID CLOTH	1/2-STOP GRID CLOTH	SINGLE NET	DOUBLE NET
SUNLIGHT/SILVER BOUNCE	SILVER/WHITE BOUNCE	GOLD/WHITE BOUNCE	BLACK BLOCK

### Mounts (page 16)

CENTER JAW VISE GRIP    GRIP HEAD

# Build Options: Floppy Cutter

See page 17-19 or visit [fjwestcott.com](http://fjwestcott.com) for additional frame and fabric options.

## KEY

10" TUBE #2000

22" TUBE #2020

46" TUBE #2022

## 4' x 4' Cine Frames

### Floppy Cutter Build Option #1

- (4) 46" TUBES - #2022
- (1) FLOPPY CUTTER - #1997
- (4) 2D CORNERS - #2024

### Floppy Cutter Build Option #2 - Travel

- (8) 22" TUBE - #2020
- (1) FLOPPY CUTTER - #1997
- (4) 2" STRAIGHTS - #2023
- (4) 2D CORNERS - #2024

### Floppy Cutter Build Option #3 - Compact Travel

- (16) 10" TUBES - #2000
- (1) FLOPPY CUTTER - #1997
- (12) 2" STRAIGHTS - #2023
- (4) 2D CORNERS - #2024



# Build Options: Book Light

See page 17-19 or visit [fjwestcott.com](http://fjwestcott.com) for additional frame and fabric options.

## KEY

10" TUBE #2000

22" TUBE #2020

46" TUBE #2022

## 4' x 4' Cine Frames

### 4' x 4' Book Light Build Option #1

- (8) 46" TUBES - #2022
- (2) SWING HINGES - #2091
- (4) 2D CORNERS - #2024

### 4' x 4' Book Light Build Option #2 - Travel

- (16) 22" TUBES - #2020
- (2) SWING HINGES - #2091
- (8) 2" STRAIGHTS - #2023
- (4) 2D CORNERS - #2024

## 4' x 6' Cine Frames

### 4' x 6' Book Light Build Option #1

- (8) 46" TUBES - #2022
- (4) 22" TUBES - #2020
- (2) SWING HINGES - #2091
- (12) 2" STRAIGHTS - #2023
- (4) 2D CORNERS - #2024

### 4' x 6' Book Light Build Option #2 - Travel

- (20) 22" TUBES - #2020
- (2) SWING HINGES - #2091
- (12) 2" STRAIGHTS - #2023
- (4) 2D CORNERS - #2024

## 6' x 6' Cine Frames

### 6' x 6' Book Light Build Option #1

- (8) 46" TUBES - #2022
- (4) 22" TUBES - #2020
- (2) SWING HINGES - #2091
- (4) 2" STRAIGHTS - #2023
- (4) 2D CORNERS - #2024

## 8' x 8' Cine Frames

### 8' x 8' Book Light Build Option #2 - Travel

- (16) 46" TUBES - #2022
- (2) SWING HINGES - #2091
- (4) 2" STRAIGHTS - #2023
- (4) 2D CORNERS - #2024



# Scrim Jim Cine Accessories

## Mounting Hardware



**Center Jaw Vise Grip** #1980

The Center Jaw Vise Grip quickly clamps onto any point of the Scrim Jim Cine frame for placement in grip heads and arms.



**Dual-Socket Magic Arm** #2199

The Dual-Socket Magic Arm mounts effortlessly to any light stand or c-stand and can be used in conjunction with the Universal Stud or Vise Grip.



**Universal Stud** #8539

The Universal Stud's 3/8"-16 thread screws directly into Scrim Jim Cine frame tubes for precise placement of Flex mats and Scrim Jim Cine frames up to 4' x 4'.



**Grip Head** #1881

This grip head features a heavy-duty design with a torque-locking washer for versatile use with virtually all lighting and grip gear.



**Compact Light Stand** #7425

This lightweight stand is designed to pair perfectly with Scrim Jim Cine frames up to 2' x 2'.



**13' Heavy-Duty Air-Cushioned Light Stand** #9914

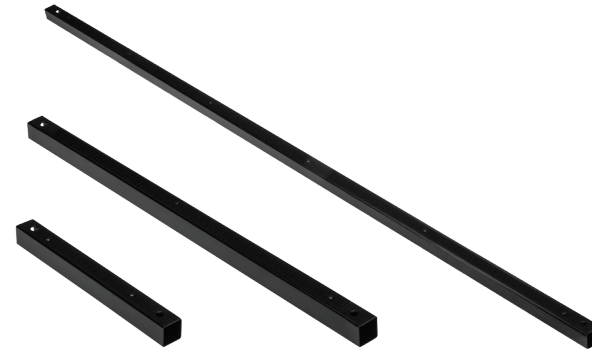
This durable air-cushioned stand is an essential stand for large or elevated scrim mounting.



# Scrim Jim Cine Framework

The Scrim Jim Cine is a complete modular system designed to bounce, block, diffuse, subtract, and shape light. This system's frame pieces are designed to configure in sizes from 1' x 1' up to 8' x 8'. Frame pieces vary in size from 10" tubes and upward. All Scrim Jim Cine pieces are available separately or in kits.

## Scrim Jim Cine Frames



**10" Tube**  
#2000

**22" Tube**  
#2020

**46" Tube**  
#2022

## Frame Connectors



**2" Straight**  
#2023

**1" Straight\***  
#2029

**2D Corner**  
#2024

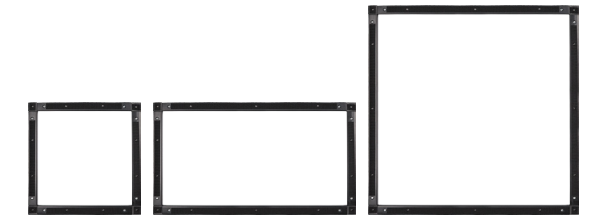


**3D Corner**  
#2090

**(2) Swing Hinges**  
#2091

## Scrim Jim Cine™ Frame Sets

Frame sets are available in sizes from 1' x 1' up to 8' x 8' and include all of the necessary connectors to construct each frame size.



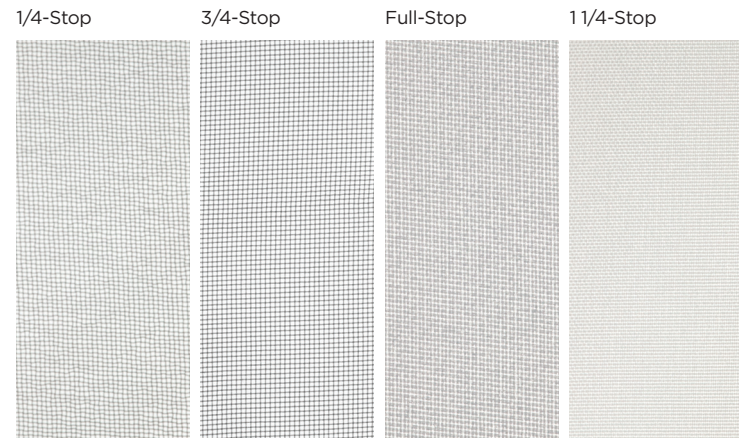
FRAME SIZE	SKU	COMPONENTS
<b>1' x 1' Frame Set</b>	1885	(4) 10" Tubes, (4) 2D Corners, (1) Strap
<b>1' x 2' Frame Set</b>	1886	(2) 10" Tubes, (2) 22" Tubes, (4) 2D Corners, (1) Strap
<b>1' x 3' Frame Set</b>	1887	(4) 10" Tubes, (2) 22" Tubes, (2) 2" Straights, (4) 2D Corners, (1) Strap
<b>2' x 2' Frame Set</b>	1889	(4) 22" Tubes, (4) 2D Corners, (1) Strap
<b>4' x 4' Frame Set</b>	1897	(4) 46" Tubes, (4) 2D Corners, (1) Strap
<b>4' x 6' Frame Set</b>	1820	(4) 46" Tubes, (2) 22" Tubes, (2) 2" Straights, (4) 2D Corners, (1) Strap
<b>6' x 6' Frame Set</b>	1833	(4) 46" Tubes, (4) 22" Tubes, (4) 2" Straights, (4) 2D Corners, (1) Strap
<b>8' x 8' Frame Set</b>	1834	(8) 46" Tubes, (4) 2" Straights, (4) 2D Corners, (1) Strap

\*1" Straight Connector for 6' x 6' Scrim Jim Cine compatibility with original 71" x 71" Scrim Jim fabrics.

# Scrim Jim Cine Fabric Options

## Diffusers

Perfect for softening and diffusing sunlight, ambient lighting, and studio lighting. These high-end fabrics will not alter color temperature or skin tones.



SIZE	1/4 STOP	3/4 STOP	FULL STOP	1-1/4 STOP
1' x 1'	-	-	1837	-
1' x 2'	-	-	1838	-
1' x 3'	-	-	1839	-
2' x 2'	1830	1842	1904	1907
4' x 4'	1831	1843	1905	1908
4' x 6'	1832	1844	1906	1909
6' x 6'	1771	1772	1774	1770
8' x 8'	1781	1782	1784	1780

## Grid Cloths

These innovative fabrics simultaneously direct and diffuse ambient and artificial lighting. Grid cloths are perfect for large or main light sources and when shooting in bright outdoor lighting.

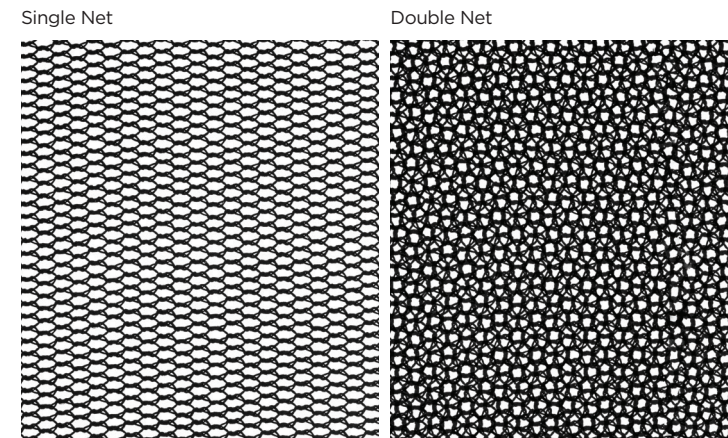


SIZE	1/4 STOP	1/2 STOP
1' x 1'	1900	1926
1' x 2'	1901	1911
1' x 3'	1902	1912
2' x 2'	1923	1929
4' x 4'	1943	1914
4' x 6'	1944	1915
6' x 6'	1945	1916
8' x 8'	1946	1917

# Scrim Jim Cine Fabric Options

## Nets

These fabric nets are essentials for run-and-gun filmmakers and on-location sets, giving users the ability to cut busy or bright backgrounds by 1 or 2 stops.



SIZE	SINGLE NET	DOUBLE NET
2' x 2'	1816	1825
4' x 4'	1817	1826
4' x 6'	1818	1827
6' x 6'	1777	1773
8' x 8'	1786	1783

## Black Blocks

These black blocks are virtually reflection-free and can be used to block ambient light. Blocks can also be used to add shadows to your subject for added dimension, flag unwanted light, and prevent light spill.



SIZE	SKU
2' x 2'	1994
4' x 4'	1995
4' x 6'	1996
6' x 6'	1778
8' x 8'	1787

## Floppy Cutter

The 4' x 8' Floppy Cutter fabric is an essential light control tool for run-and-gun filmmakers, directors of photography, and on-the-go cinematographers. This versatile fabric can be used to block light and flag both studio and ambient lighting.



SIZE	SKU
4' x 8'	1997

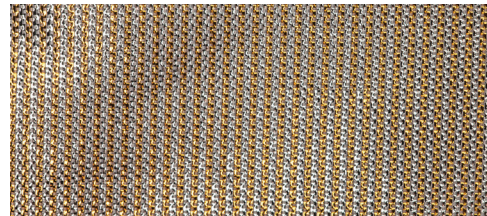
# Scrim Jim Cine Reversible Fabrics



SIZE	SILVER & SUNLIGHT	SILVER & WHITE	GOLD & WHITE	UNBLEACHED MUSLIN & BLACK
2' x 2'	1983	1987	1990	-
4' x 4'	1984	1988	1991	1948
4' x 6'	1985	1989	1992	1949
6' x 6'	1779	1776	1775	1950
8' x 8'	1986	1785	1993	-

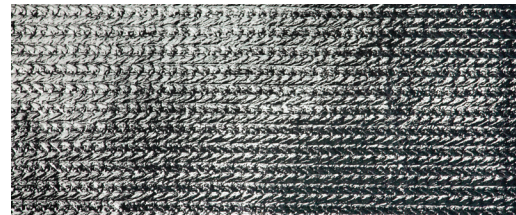
## Sunlight Bounce

This sunlight bounce fabric is interwoven silver and gold, adding a slight warmth to subjects with specular highlights.



## Silver Bounce

This silver bounce fabric adds bright, specular highlights with cooling tones to your subject.



## Gold Bounce

This gold bounce fabric adds smooth, warming tones to your subject or scene.



## Unbleached Muslin

This unbleached fabric adds soft, natural looking illumination to the scene.



## White Bounce

This white bounce fabric adds neutral and bright highlights to your subject or scene.



# the C47 Book Light Kit #2092



Create a soft output with an amazing wrap-around quality by positioning a light source at a 45° angle with the reflective interior of the book light. The adjustable diffusion front can easily be moved closer to or further away from the light source.

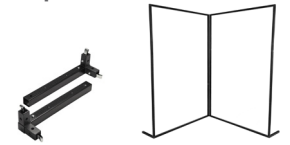
**Kit Components:** (6) 46" Frame Tubes, (8) 22" Frame Tubes, (8) 2D Corners, (8) 2" Straight Connectors, (2) Swing Hinge Connectors, (1) 4' x 6' Unbleached Muslin/Black, (1) 4' x 6' 3/4-Stop Diffusion, (1) 4' x 6' 1/2-Stop Grid Cloth, (1) 4' x 6' Silver/White Bounce, (1) Wheeled Travel Case

See page 15 for all Book Light build options.

## Book Light Legs #2094

(2) 3D CORNERS  
(2) 10" SCRIM JIM CINE TUBES

For added stability of any Scrim Jim Cine book light build



# the C47 DP Kit #2093



DP Kit collapses to 22"

Featuring a unique and customizable design, this kit provides the ultimate light control for on-the-go filmmakers, directors of photography, run-and-gun shooters, gaffers, and cinematographers.

**Kit Components:** (8) 22" Frame Tubes, (4) 2 Corners, (4) 2" Straight Connectors, (1) 4' x 8' Floppy Cutter, (1) 4' x 4' Full-Stop Diffusion, (1) 4' x 4' Silver/White Bounce, (1) Center Jaw Vise Grip, (1) Travel Case

See page 14 for all Floppy Cutter build options.

**NEW**

# FLEX™ LED MATS

DIMMABLE, PLIABLE, & FLICKER-FREE

- Lightweight and moldable 1/4" thin design
- High-output LEDs with pristine 95-98 CRI
- Available in bi-color, daylight, or tungsten
- Multiple sizes including 1' x 1' and 1' x 2'
- Durable IP 64 weatherproof housing
- Dynamic light spread up to 360°
- Optional battery, mounts, and framework



## Flex™ Pairs Perfectly with Scrim Jim Cine® Frames

Cutting-edge Westcott Flex mats pair perfectly with Westcott's new Scrim Jim Cine system, offering the ultimate in lighting control. Flex and Scrim Jim Cine Frame combinations offer many output options, sizes, and fabrics.



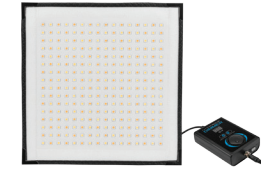
# Flex™ Mat Options

Includes Flex LED Mat with Dimmer and Power Adapter



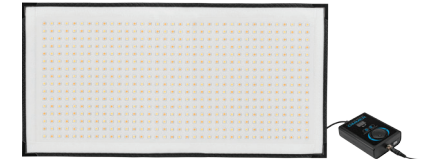
**Flex 10" x 3" Mat**

**D** #7452 **B** #7493



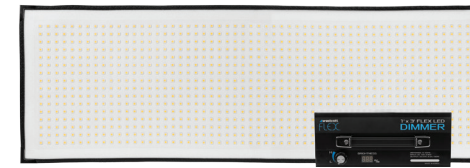
**Flex 1' x 1' Mat**

**D** #7430 **B** #7492



**Flex 1' x 2' Mat**

**D** #7450 **B** #7494



**Flex 1' x 3' Mat**

**D** #7470



**Flex 2' x 2' Mat**

**D** #7490

FLEX MAT	SKU	COLOR	CRI	LUX AT 1M	FC AT 1M	KELVIN	POWER	DIMMER
<b>10" x 3" Daylight</b>	7452	<b>D</b>	95	500	46	5600	15w AC	Dial, 5-100%
<b>10" x 3" Bi-Color</b>	7493	<b>B</b>	95-98	~500	~46	2800-6000	15w AC	Digital, 0-100%
<b>1' x 1' Daylight</b>	7430	<b>D</b>	95	2000	186	5600	55w AC	Digital, 0-100%
<b>1' x 1' Bi-Color</b>	7492	<b>B</b>	95-98	2000	~186	2800-6000	55w AC	Digital, 0-100%
<b>1' x 2' Daylight</b>	7450	<b>D</b>	95	3900	362	5600	100w AC	Digital, 0-100%
<b>1' x 2' Bi-Color</b>	7494	<b>B</b>	95-98	~3900	~362	2800-6000	100w AC	Digital, 0-100%
<b>1' x 3' Daylight</b>	7470	<b>D</b>	95	6000	557	5600	150w AC w/Dimmer	Digital, 5-100%
<b>2' x 2' Daylight</b>	7490	<b>D</b>	95	9100	845	5600	200w AC w/Dimmer	Digital, 5-100%

Visit [fjwestcott.com](http://fjwestcott.com) for complete Flex offering, including complete kits with Scrim Jim Cine!

# Thank You!

for purchasing this Westcott® product.

---

Our promise to you is supported by a commitment to offer the most innovative solutions, exceptional product quality and first class service and support.

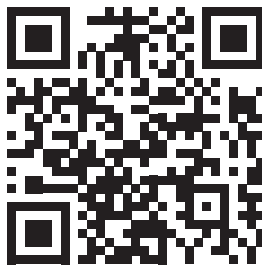
---

## Register your purchase.

We have a simple form for registering your Westcott purchase that provides you with added assurance for your gear: [fjwestcott.com/warranty](https://fjwestcott.com/warranty)

## Visit [fjwestcott.com](https://fjwestcott.com)

- Video Tips
- Product Support
- Knowledge Base
- Product Reviews
- Contests & More!



 **westcott**®

[FJWESTCOTT.COM](https://fjwestcott.com)